

# MEETING WITH ANC 6D

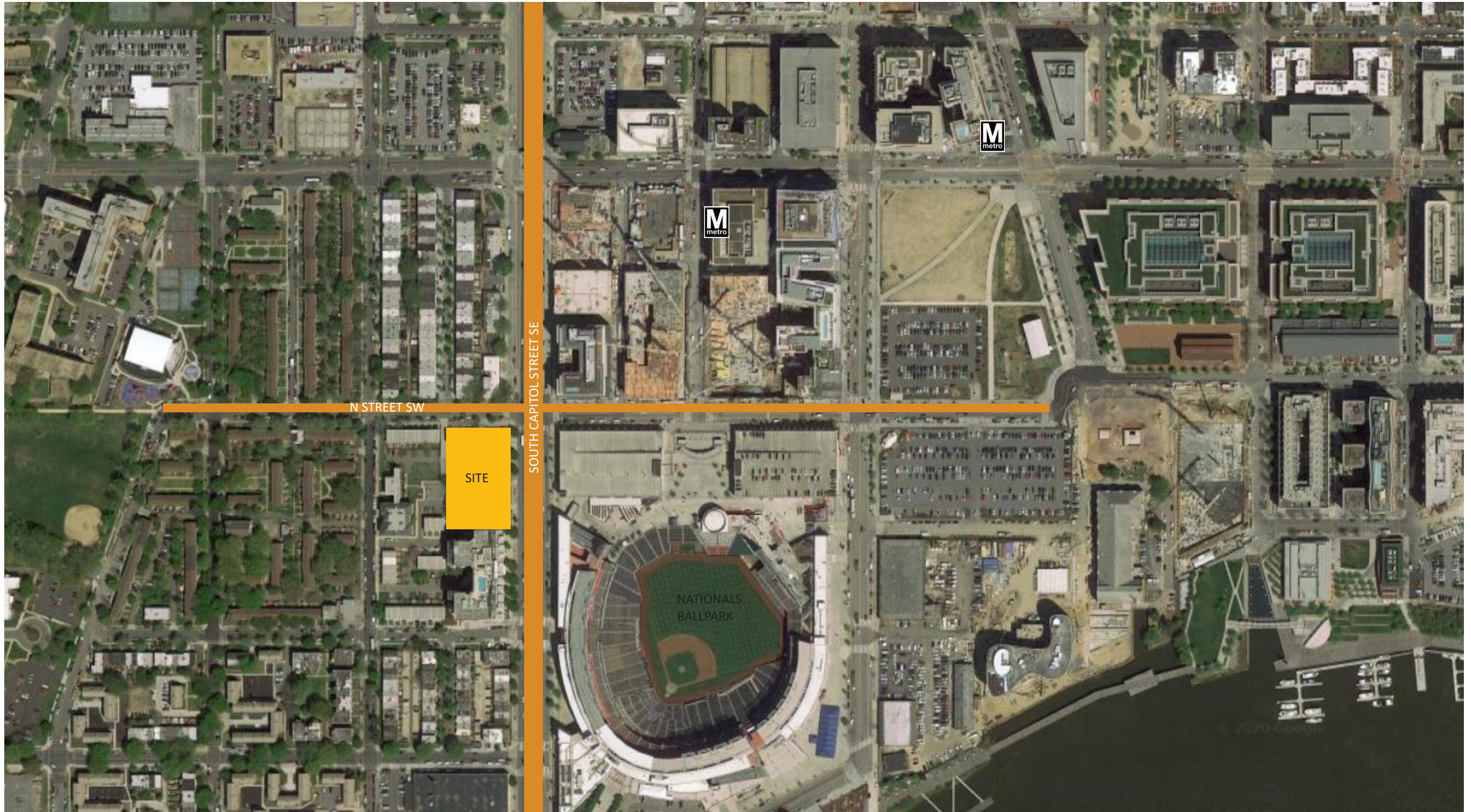
1319 SOUTH CAPITOL STREET SW

13 JULY 2020



**FORTIS**

**BEYER  
BLINDER  
BELLE**





SOUTH CAPITOL STREET LOOKING NORTH



N/S ALLEY LOOKING NORTH TOWARDS N STREET



E/W ALLEY LOOKING EAST



N STREET LOOKING WEST



N STREET TOWNHOUSES



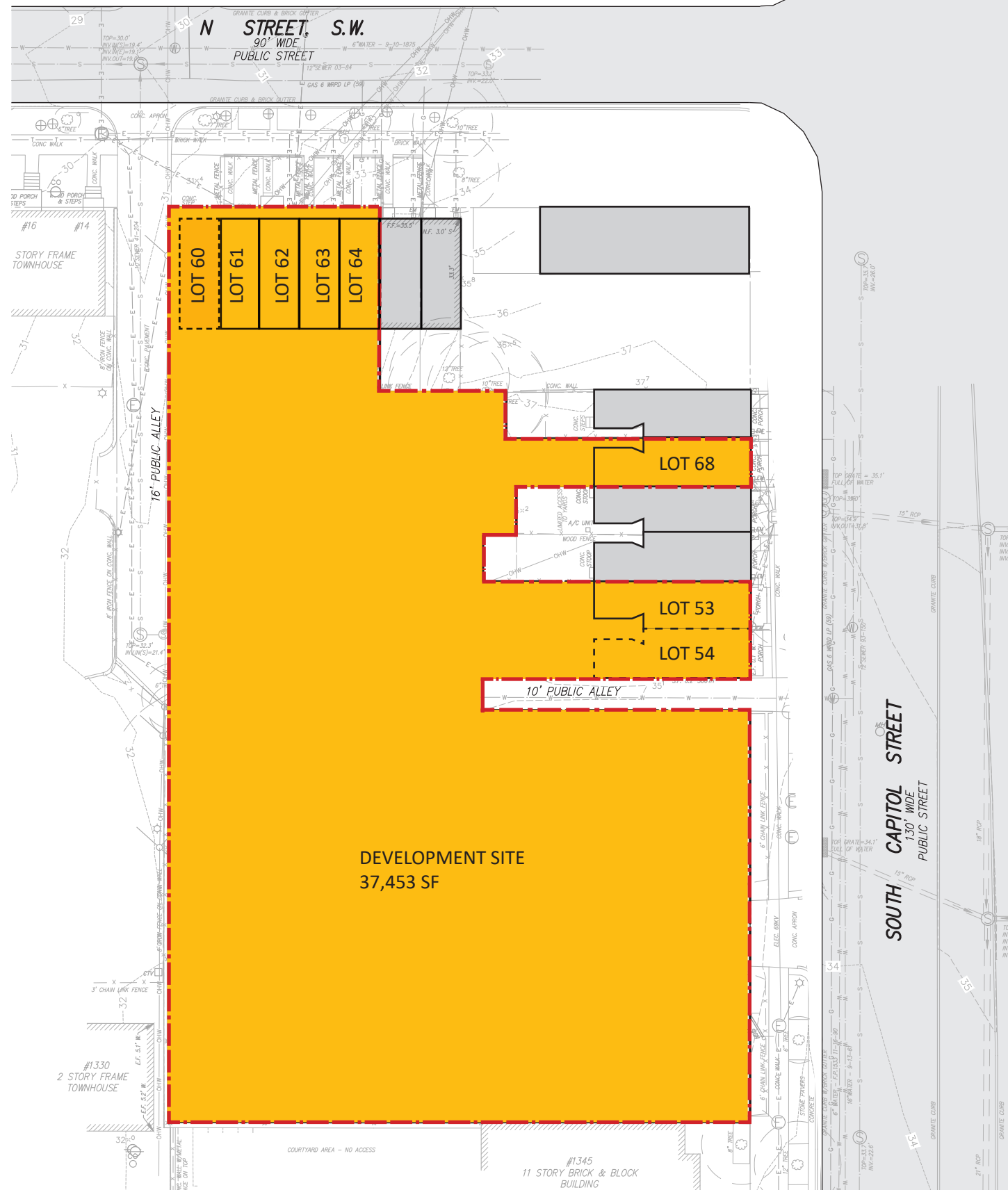
LOOKING SOUTH ON SOUTH CAPITOL STREET



SYPHAX VILLAGE



CURRENT PARKING LOT



- DEVELOPMENT SITE
- TOWNHOUSES OWNED BY DEVELOPER
- TOWNHOUSE TO BE RAZED



SOME PROPOSED STREET TREES HAVE BEEN REMOVED FOR ILLUSTRATION



SOME PROPOSED STREET TREES HAVE BEEN REMOVED FOR ILLUSTRATION



ALL GLASS STUDY



CURRENT DESIGN

SOME PROPOSED STREET TREES HAVE BEEN REMOVED FOR ILLUSTRATION

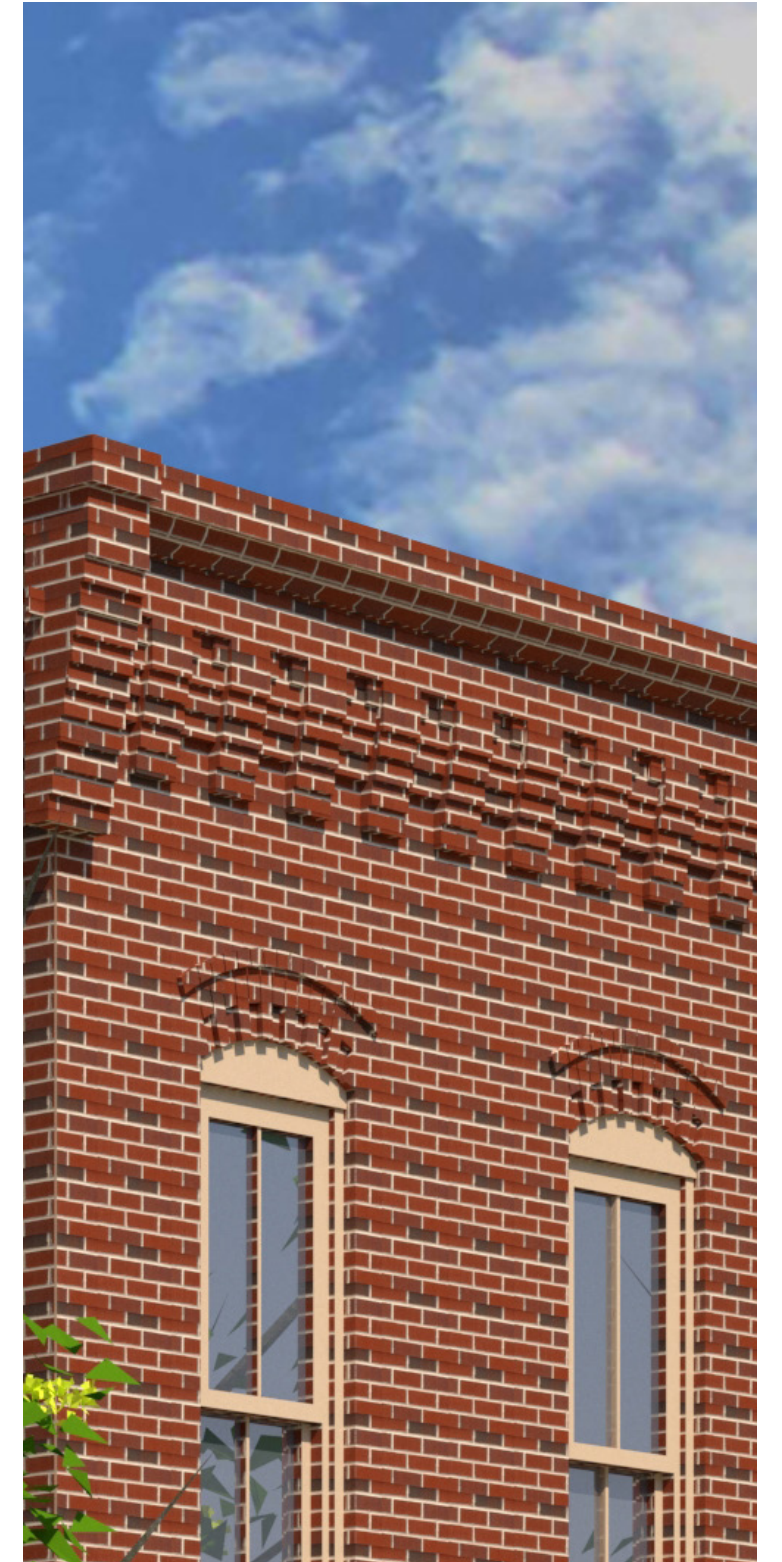








NEW PROPOSED SOUTH CAPITOL TOWNHOUSES

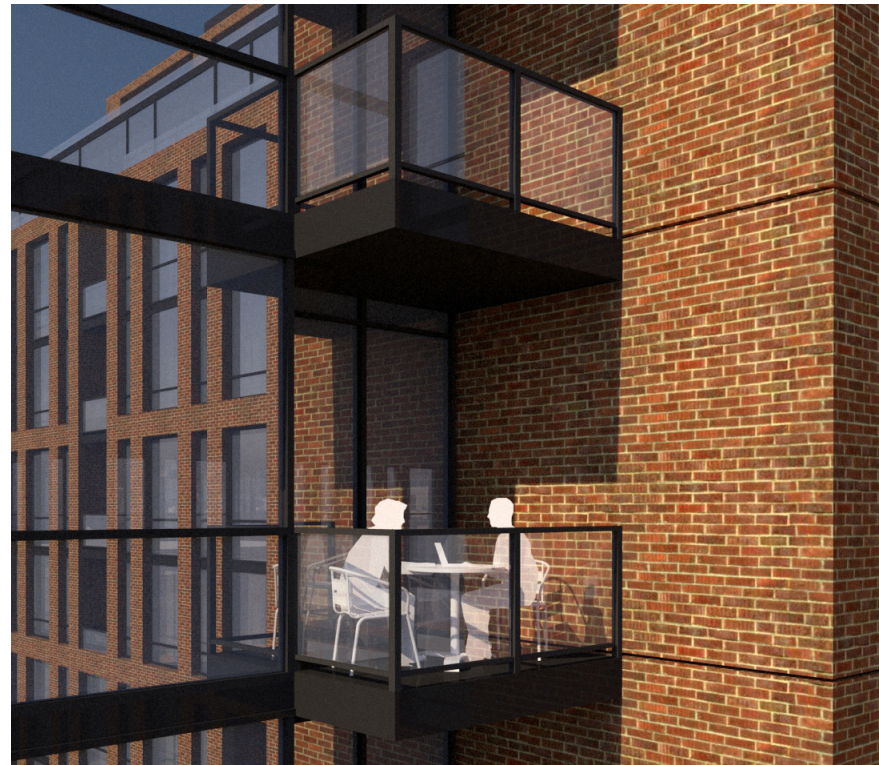


EXISTING TOWNHOUSE CORNICE DETAIL





SOUTH CAPITOL BALCONY DETAIL



STEPPED FACADE BALCONY DETAIL



BRICK OPTION 1  
MONARCH VELOUR  
GLEN GERY BRICK



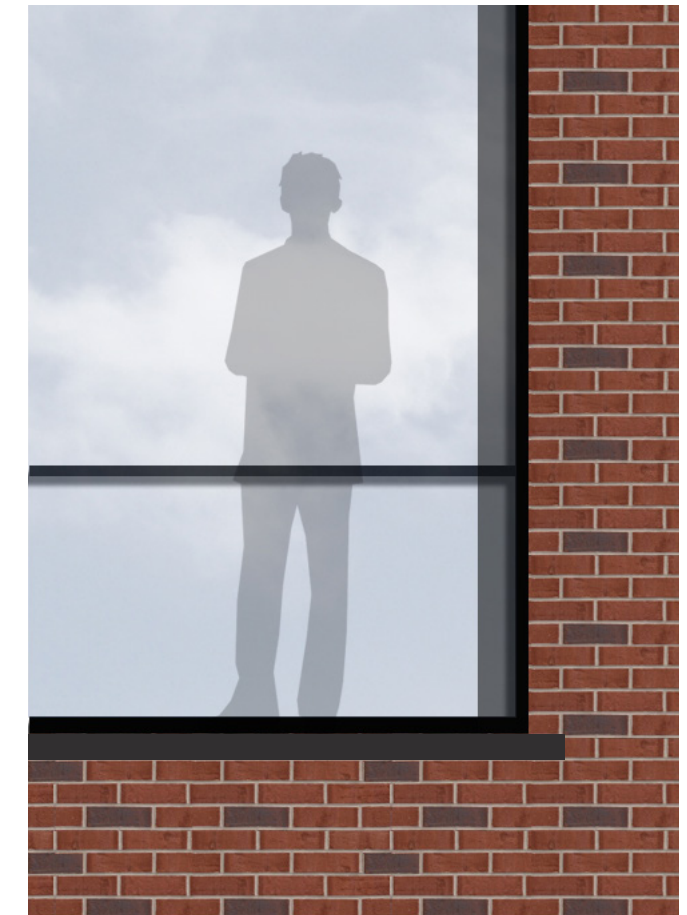
DARK GREY MULLION



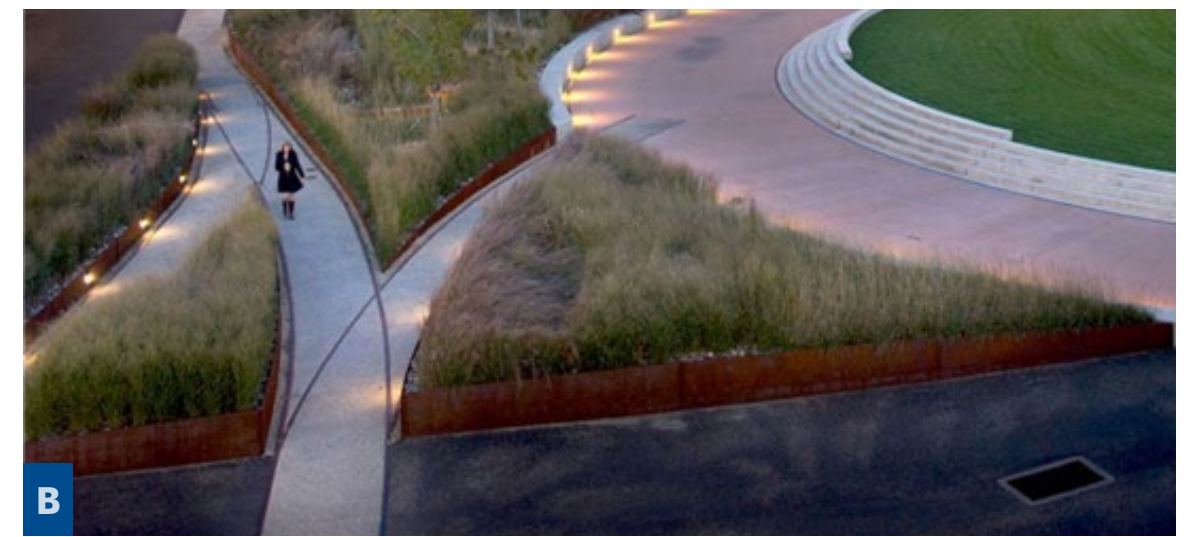
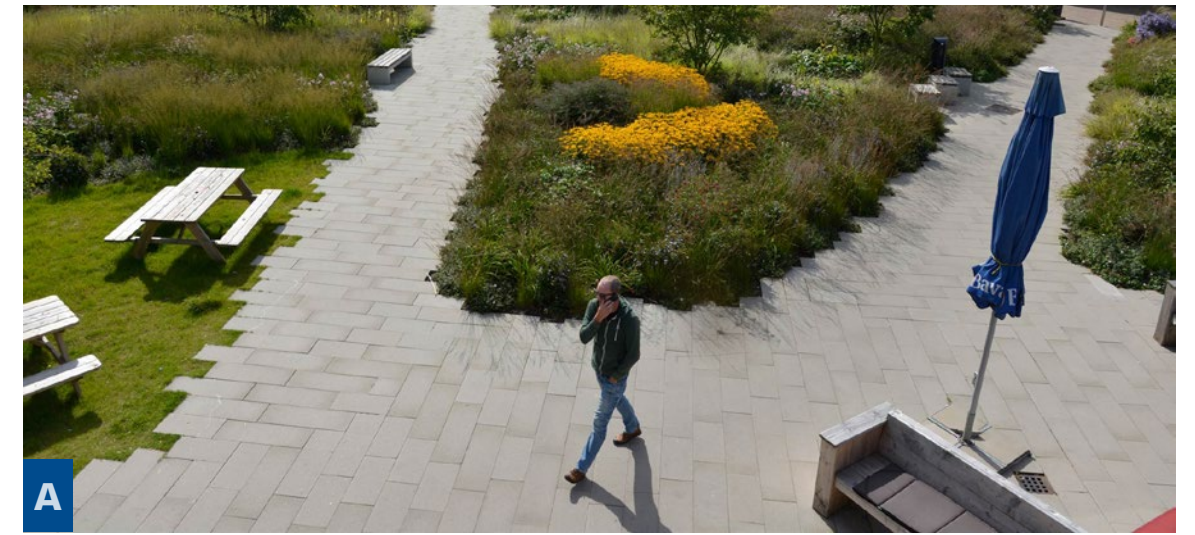
BRICK OPTION 2  
KINGS MILL  
GENERAL SHALE



ENLARGED ELEVATION



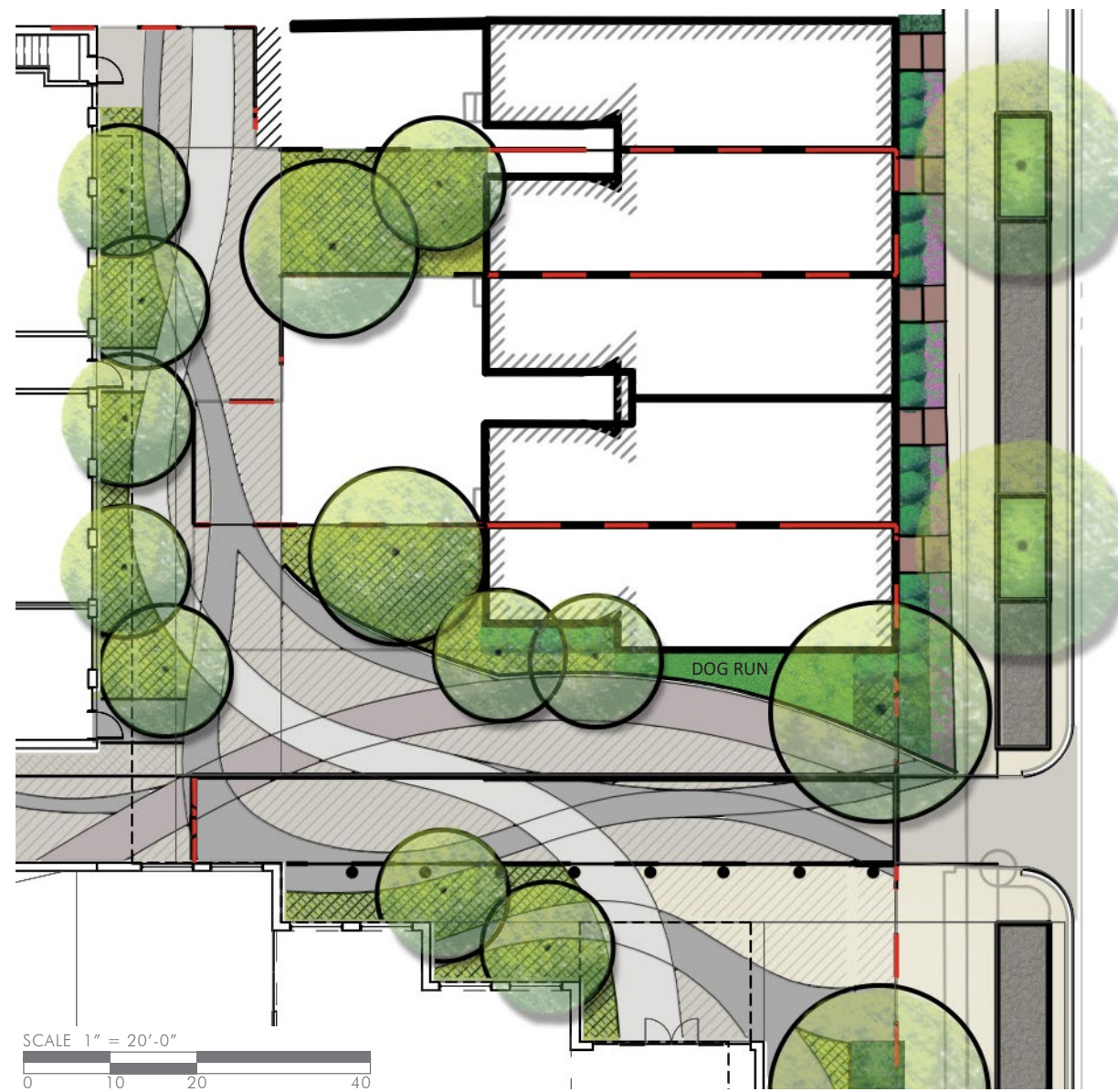
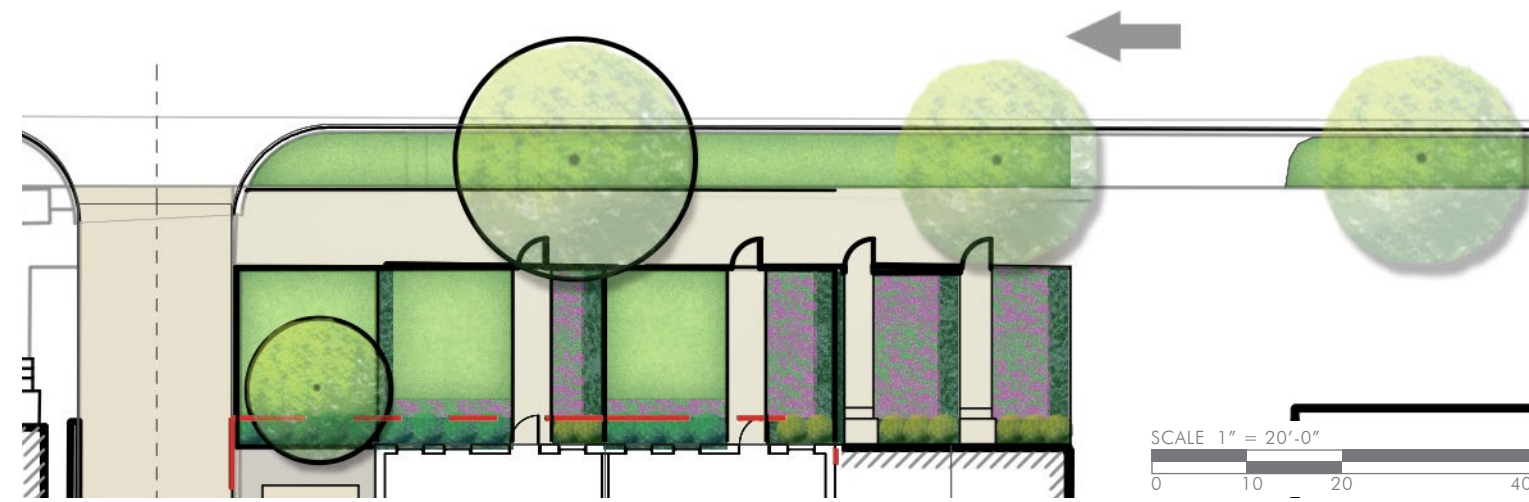
ENLARGED ELEVATION

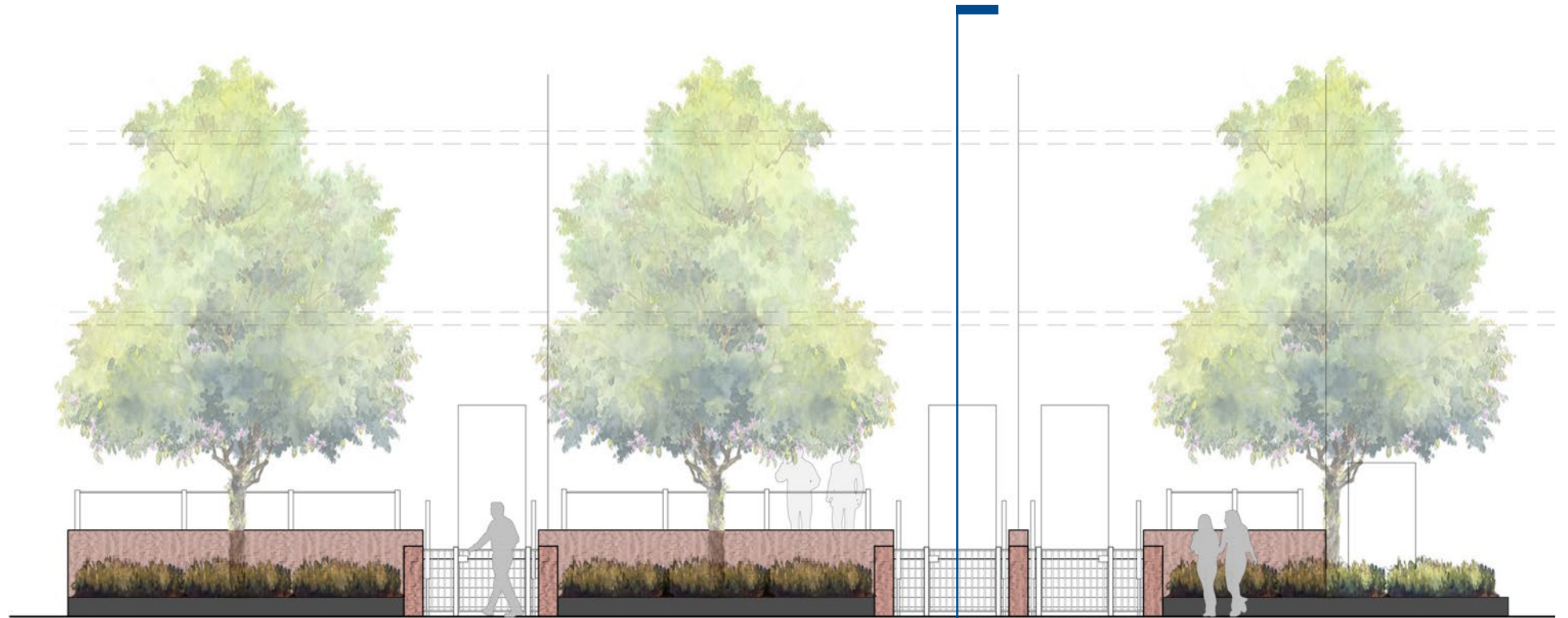
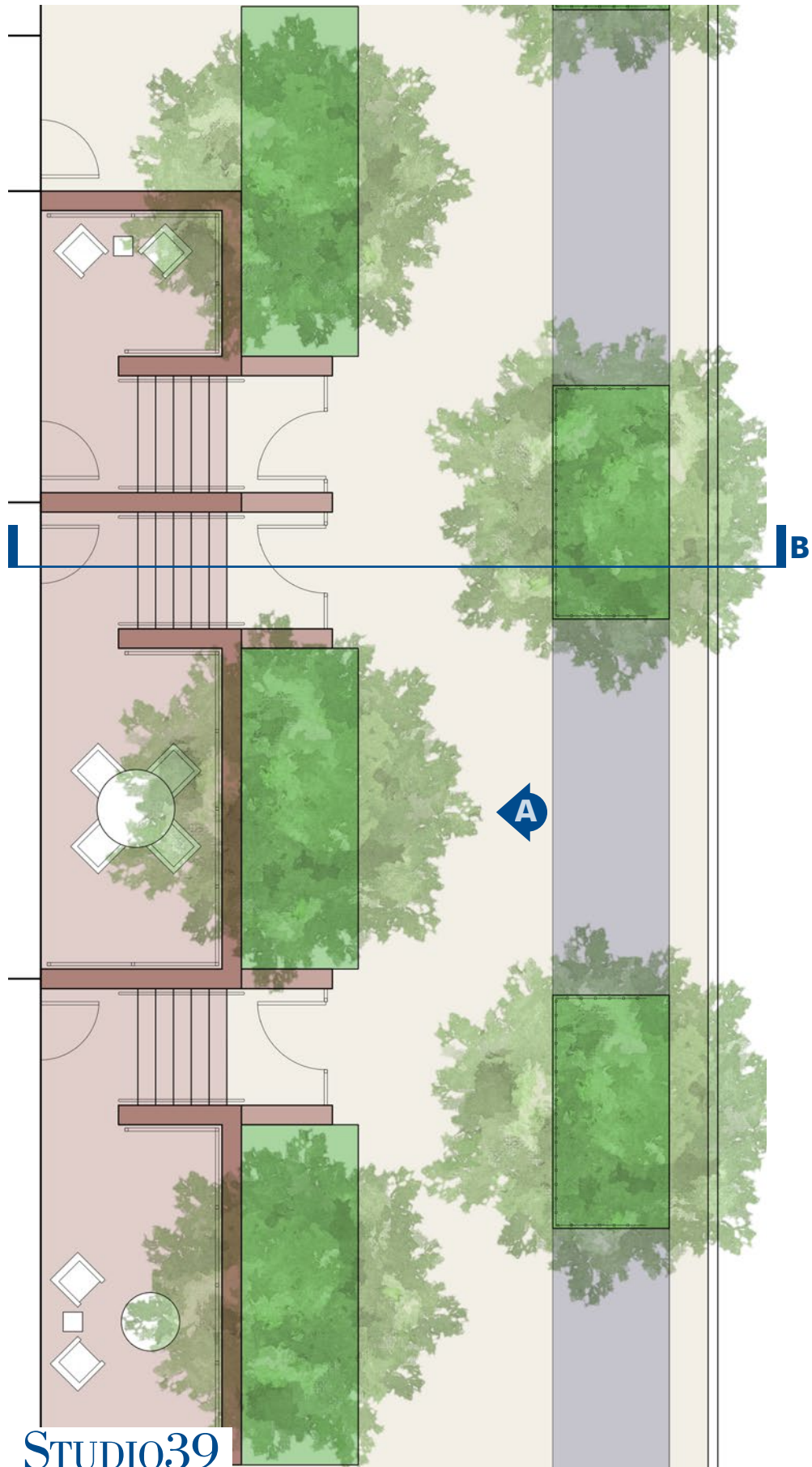


**STUDIO39**

**BEYER  
BLINDER  
BELLE**

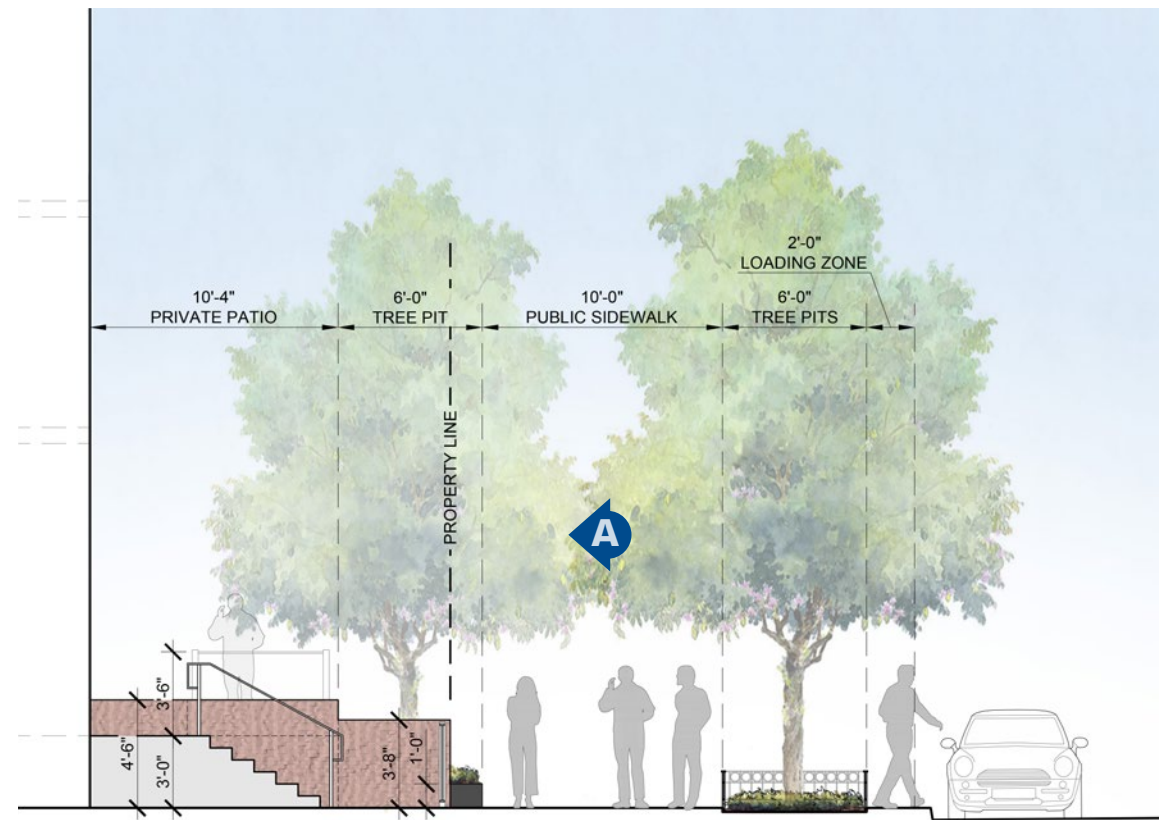
1319 SOUTH CAPITOL STREET SW  
13 JULY 2020





**A** S. CAPITOL STREET TOWNHOMES - ELEVATION  
1/8" = 1'-0"

**B**



**B** S. CAPITOL STREET TOWNHOMES - SECTION  
1/8" = 1'-0"





- LEGEND**
- ▶ RESIDENTIAL PARKING RAMP ENTRY/ EXIT
  - ▶ LOADING
  - ▶ RESIDENTIAL LOBBY ENTRY
  - AMENITY
  - RESIDENTIAL UNITS
  - RESTORED S. CAP TOWNHOUSE OWNED BY DEVELOPER
  - LOADING/ MECH/ CORE
  - PARKING