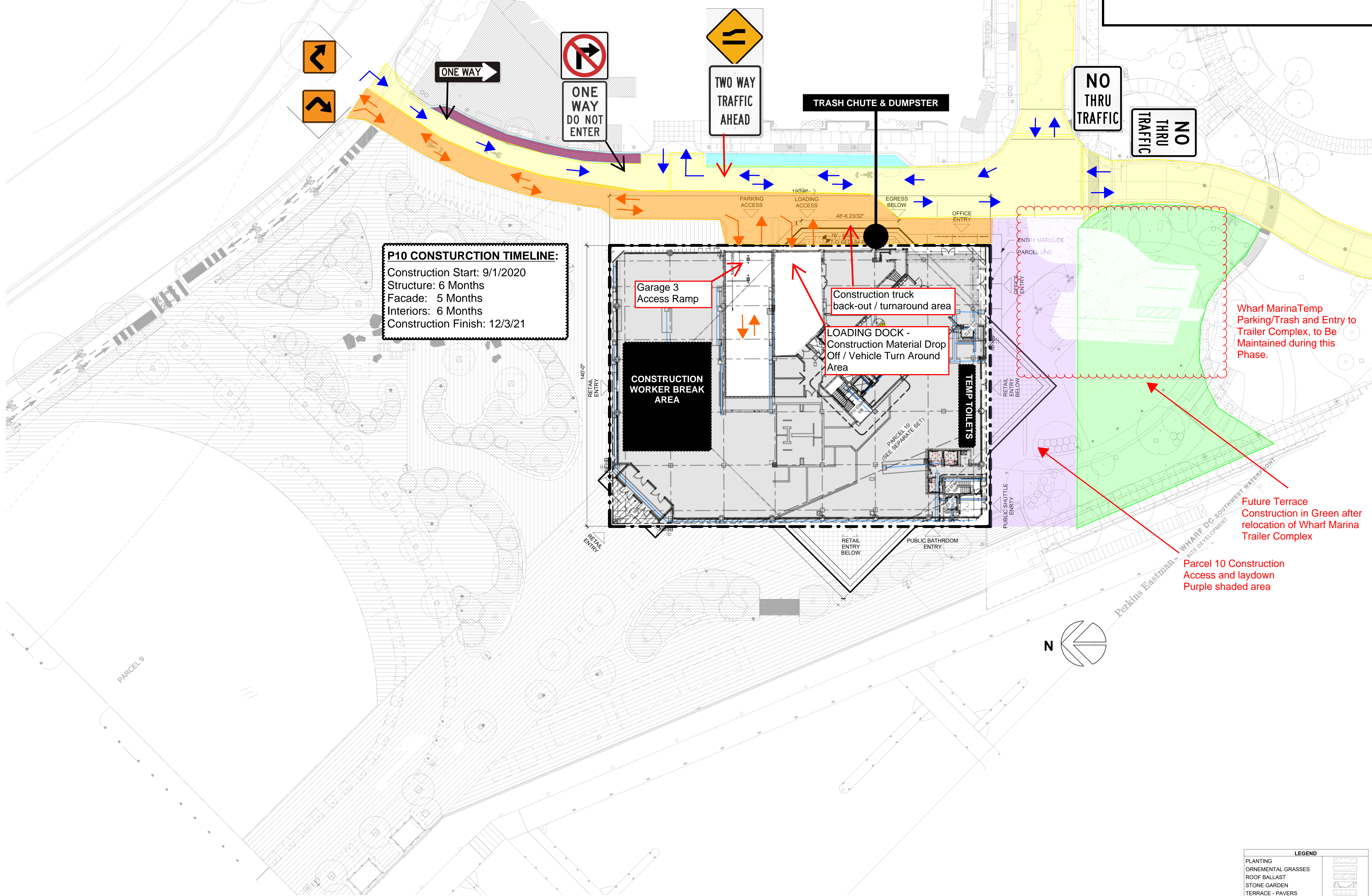


ATTACHMENT B
THE WHARF - PHASE 2
WATER STREET ACCESS/P10 SUP PLAN
CONCRETE PHASE
AS OF 6/15/2020

Duration
 Start: Garage #3 Top-Out
 Finish: Horizontal Substantial Completion

Notes
 -Permanent concrete traffic barriers for duration mentioned above
 -Sidewalk not to be impacted by construction and to remain open for pedestrian traffic
 -Signs to be installed to withstand winds

- Through Way Traffic (No Construction Vehicles)
- Construction Zone
- Blue - Parking
- Magenta - Church Parking
- Purple - Construction Installation Access
- Green - Construction Laydown Area



P10 CONSTRUCTION TIMELINE:
 Construction Start: 9/1/2020
 Structure: 6 Months
 Facade: 5 Months
 Interiors: 6 Months
 Construction Finish: 12/3/21



DISTRICT
WHARF

PARCEL 10
 550 Water Street SW
 Washington D.C. 20024

Morris Adjmi Architects
 60 Broad Street, 32 Floor
 New York, NY 10004
 T. (212) 982-2020

MASTER DEVELOPER
 Hoffman - Madison Waterfront
 760 Maine Ave. SW
 Washington, DC 20024
 Phone: 202-696-0010

MECHANICAL
 WSP USA
 1300 North 17th Street
 Suite 1000
 Arlington, VA 22209
 T. 202.362.2800

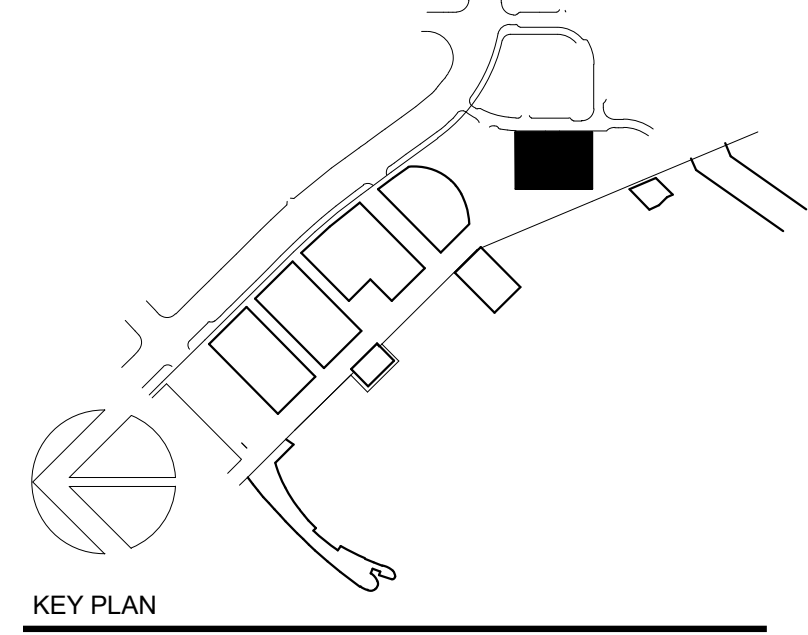
STRUCTURAL
 S K & A Group
 14335 Park Potomac Avenue
 Suite 300
 Potomac, MD 20854
 T. 301.881.1441

LANDSCAPE
 Parker Rodriguez, Inc.
 101 N. Union Street
 Suite 303
 Alexandria, VA 22314
 T. 703.548.5010

NO.	DATE	REVISION

SUBMISSION	DATE

BID SET



SITE PLAN

LEGEND

PLANTING	
ORNAMENTAL GRASSES	
ROOF BALLAST	
STONE GARDEN	
TERRACE - PAVERS	
TERRACE - IPE	
MEP	
PROPOSED TREE	

1 SITE PLAN
 1" = 20'-0"

DRAWING TITLE
 SCALE: 1" = 20'-0"
 PROJECT NO: 1634
 DATE: 10 MAY 2019
A-011.00
 SEAL DRAWING NO.