

OFFICE OF NEIGHBORHOOD SAFETY AND ENGAGEMENT

VIOLENCE PREVENTION

EFFORTS IN WARD 6



Safer, Stronger DC  
Office of Neighborhood  
Safety and Engagement



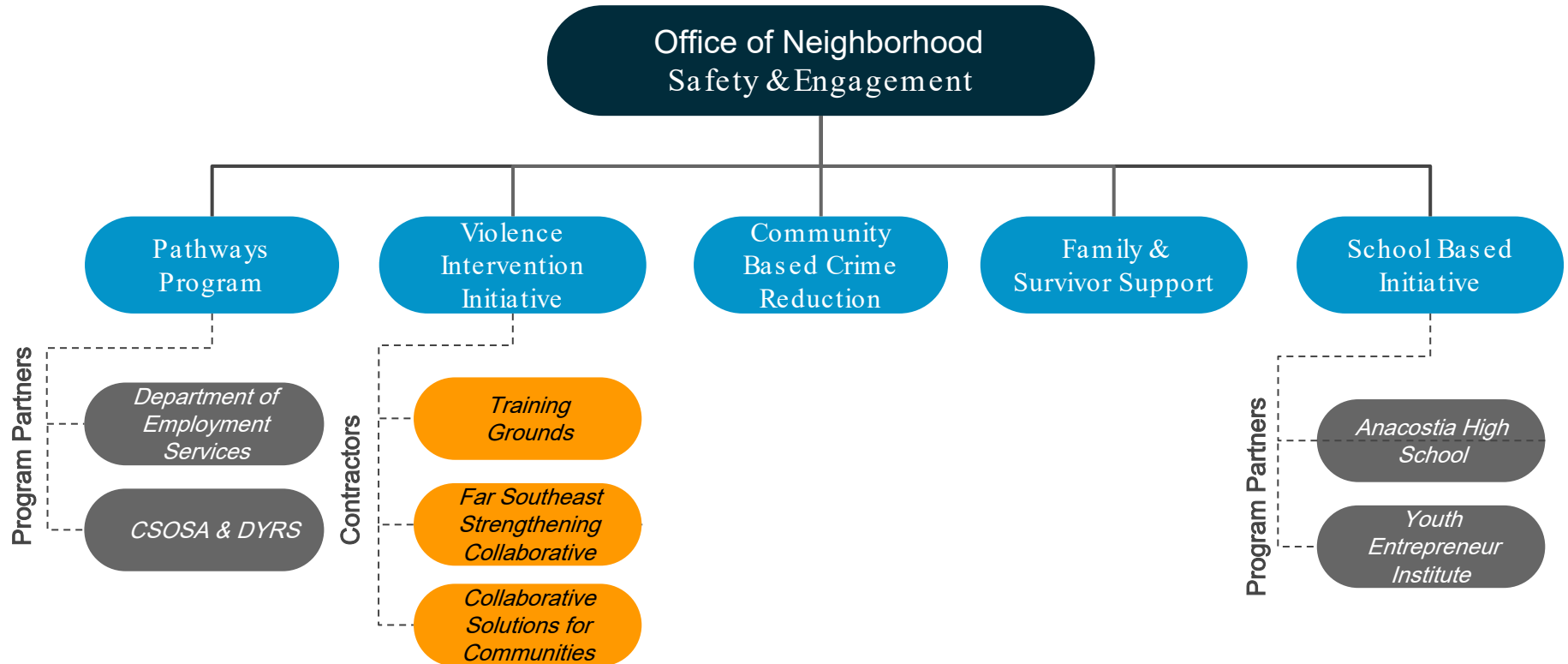
**Our mission is to foster community-based strategies to help prevent violence and increase public safety.**

**Our strategy is rooted in a public health approach to violence prevention, recognizing that reducing crime is not accomplished through law enforcement alone.**

# Impact of COVID-19

- All ONSE programs continue to operate, though some through modified processes.
- Crime Statistics
  - As of September 14, the District has had 135 homicides, a 13% increase from the same point-in-time in 2019.
  - District-wide, July was a particularly violent month, with a total of 30 homicides and several brazen attacks that caught the entire community's attention.
  - We have seen an increase in the number of juvenile victims and victims under the age of 20.
- It is too early to understand the full impact of this pandemic on violent crime, but it is clear that the pandemic has exacerbated the root causes of gun violence.
- One of the biggest challenges to sharing the success stories of ONSE's work is the impossibility of quantifying the number of violent crimes averted and lives not lost due to our prevention and intervention efforts.

# ONSE has five primary programs





# Pathways Program

The Pathways program is a transitional program for individuals ages 20-35 who have been identified as being at-risk of participating in, and/or becoming victims of violent crime.

- 25 participants per cohort
- 9 week curriculum focused on life skills, workforce development, mental health, barbering, and audio engineering
- 6 months subsidized employment



# The Pathways Program uses a transitional employment program model

## PHASE 1 - CLASSROOM

Intensive, nine-week classroom based training that focuses on life and job skills.

## PHASE 2 - SUBSIDIZED WORK

Up to six months of subsidized employment, which helps participants:

- Gain real work experience
- Build positive work habits
- Establish a record of employment

## PHASE 3 - RETENTION

Long-term retention and support services aimed at ensuring participants successfully transition from subsidized employment to permanent unsubsidized employment, retain said employment, and continue to pursue their other self-identified personal and professional goals.

Throughout every phase of the program, Pathways participants are offered a host of wraparound services.

Since inception, the Pathways program has served 99 participants;  
13 participants were Ward 6 residents.



# Violence Intervention Initiative

The ONSE VII works to stop the spread of violence in communities by:

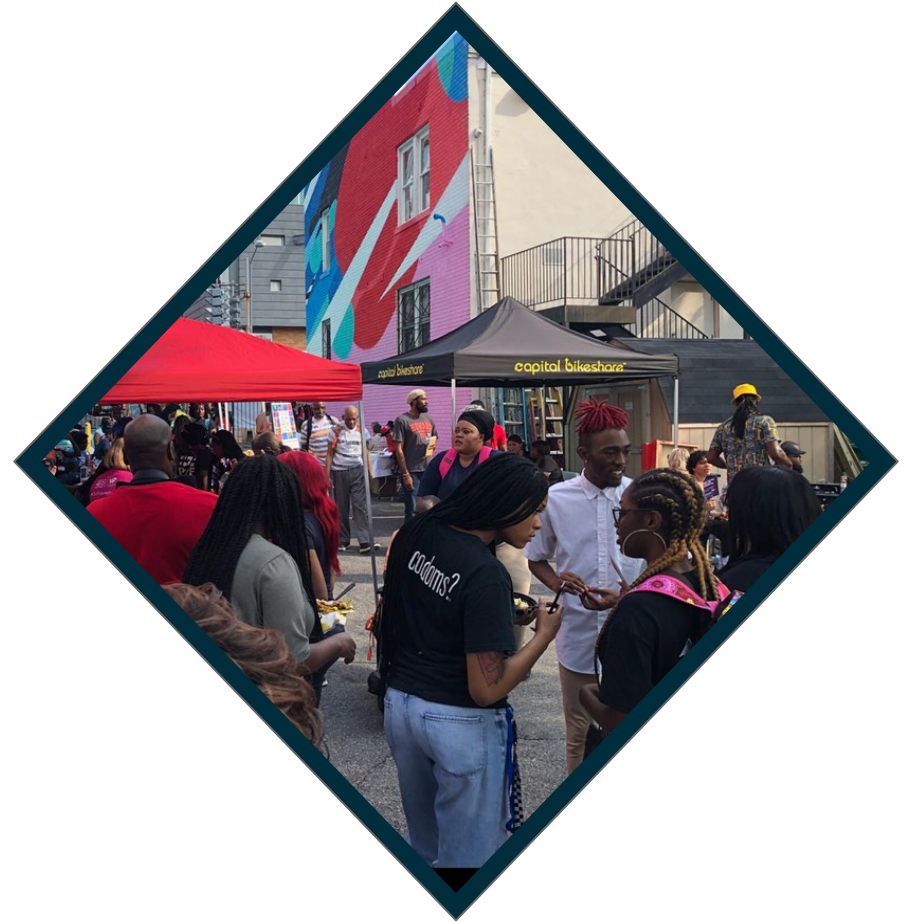
- Locating and treating individuals engaging in high-risk activity through relentless pursuit
- Identifying group or crew conflicts and working to implement ceasefires or mediations
- Focusing on priority communities suffering from high rates of violent crime

Three contractors cover 20 priority communities:

- Wards 1-5: Collaborative Solutions for Communities
- Wards 6 & 7: Training Grounds
- Ward 8: Far Southeast Family Strengthening Collaborative

# Violence Intervention Initiative in Ward 6

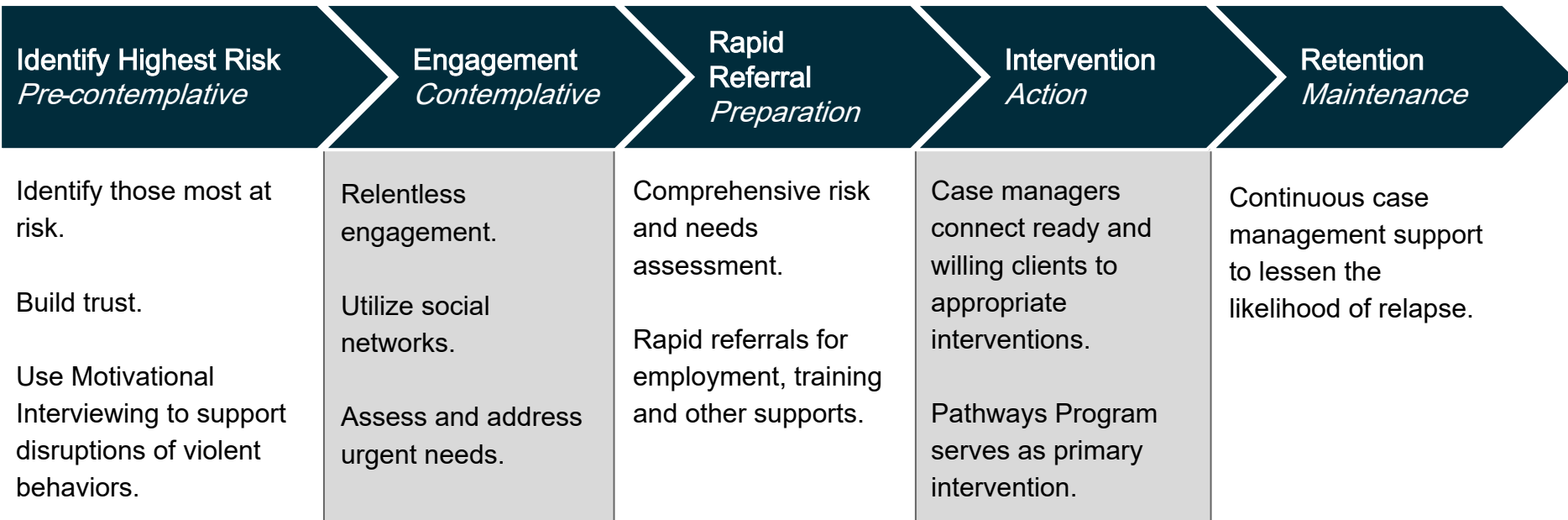
- Training Grounds serves 3 neighborhoods in Ward 6:
  - Greenleaf
  - Syphax Gardens
  - Rosedale
- ONSE contract funds the following in Ward 6:
  - 4 Full-Time Violence Interventionist
  - 3 Part-Time Violence Interventionist
  - 3 Community Navigators
  - 1 Case Managers







# Our model is person-centered; services align with an individual's readiness



While individual interventions take place, Violence Interventionists simultaneously work towards facilitating group and crew interventions, including ceasefires and mediations.



# Community Based Crime Reduction

**SERVING BUENA VISTA TERRACE &  
WOODLAND TERRACE**

Grant is in partnership with the Office of Victims Services and Justice Grants (OVSJG) to bring health and wellness services to residents of BVT and Woodland Communities

Multiple CBOs are contracted to provide services including:

- Far Southeast Family Strengthening Collaborative and their subcontractors:
  - Man Power DC
  - Indy B Mentoring and Modeling
  - J&J Monitoring
  - YaayMe
- Exodus and their subcontractor
  - Restore U 199

# Community Based Crime Reduction

Community Clean-Ups		
Far SE Woodland	June 16th	
ONSE BVT CleanUp	June 24th	43 Participants
Peace Rally		
Woodland	June 30th	32 Participants
COVID-19 Testing		
Woodland Terrace	FSFSC	61 Participants
Woodland Terrace	Exodus	199 Participants
Buena Vista Terrace	ONSE	62 Participants
Hartford Street	FSFSC	50 Participants
Community Food Distribution <small>(Fiscal Year)</small>		
Exodus		Distributed 634 meals
Far SE		Distributed 9,100 meals
Far SE & Exodus Collaboration		Distributed 4,870 meals
Lunch Distribution Buena Vista Terrace <small>(Summer 2020)</small>		
Bag Lunches		Distributed 9000 lunches
Hot Meal Distribution Buena Vista Terrace <small>(Summer 2020)</small>		
Hot Meals		Distributed 600 hot meals

- CBCR Partners distributed over 4,300 PPE items to Buena Vista Terrace and Woodland Terrace.
- Exodus:
  - 40 Families Served
  - 3 Retreats engaging 25 Participants
  - 39 Families in Clinical Counseling Services
- FSFSC served:
  - 65 Priority Clients
  - 155 participants in Workforce Development and Virtual Mentoring
  - 1695 participants in Community Engagement and Outreach Activities



# Family & Survivor Support

The FSS program is one of the District's responses to community violence. FSS aims to:

- Facilitate a multi-agency approach to serve survivors and families in the immediate aftermath of a crisis
- Serve as a direct link between survivors and/or immediate family members and government/community-based service providers.

FSS receives the following cases:

- All homicides
- All juvenile shootings, stabbings, and assaults
- All adult shootings, stabbings, and assaults deemed to be gang/crew related

# Serving Ward 6 Families & Survivors

In FY20 to date, the team has received 318 qualifying cases, 31 of which have been in Ward 6.

## Ward 5 Cases

Adult Homicides	17
Adult Shooting	6
Adult Stabbing	0
Juvenile Homicide	1
Juvenile Shooting	7



A photograph of two students in a computer lab. One student is wearing a black puffer jacket and is seated at a desk, looking at a computer monitor. Another student is standing behind them, also looking at a monitor. The lab has several computer workstations with monitors and keyboards. The text 'School Based Initiative' is overlaid in large white letters on the left side of the image.

# School Based Initiative

The ONSE Leadership Academy is a school-based initiative that was launched in Fall 2019 in partnership with Anacostia High School.

The program operates with 6 full-time staff members working with 35 Students (returning 12th graders).

Goals are to improve a student's ABCs:

- Attendance
- Behavior
- Credits
- Safety

Program Components include:

- Action Plans & Academic Mapping
- Attendance monitoring
- Safe Passage
- Restorative Circles
- Community Visits

# Student Based Initiative

- ONSE is proud to report that 5 students made Honor Roll and 12 successfully graduated from AHS in Spring of 2020!
- A majority of the students selected to participate in the pilot year were in credit recovery for at least one academic class.
- Through regular data collection and analysis, the program has observed that participating students have had decreases in:
  - The number of excused and unexcused class absences
  - The number of classes they were failing
  - The number of classes for which they were required to attend credit recovery

