

Audi Field + Nationals Park 2025 Traffic Operations & Parking Plan

April 1, 2025



District Department of Transportation

Audi Field + Nationals Park

2025 Traffic Operations & Parking Plan

Table of Contents

Executive Summary	4
Stadium Schedules	7
Wharf Events	11
Other Special Events that Could Impact Area Roads/Metrorail	11
Base and Enhanced TOPPs	11
Active Special Events Management	12
Street Closures & Restrictions.....	14
Post-Game Roadway Reconfigurations.....	19
Residential Access Placards.....	22
Traffic Signal Timing	24
Variable Message Signage (VMS)	25
DDOT Traffic Control Personnel	26
Parking Restrictions.....	28
Stadium Event Performance Parking	29
Off-Street Parking.....	31
Stadium Event Performance Parking	33
For-Hire Vehicle Access	33
Charter Bus Management	36
Public Transit.....	36
Bikes and Scooters	39
Restrictions on Work in Public Space.....	42
Sidewalk Vendors	42
Emergency Evacuation Walkout Plan.....	42

Figures

Figure 1 Stadium Event Zone and Broader Impact Area	6
Figure 2 Communication Process Flowchart	13
Figure 3 Pre-Game Street Closures and Restrictions During Audi Field Events	14
Figure 4 Post-Game Street Closures and Restrictions During Audi Field Events.....	16
Figure 5 Pre-Game Street Closures and Restrictions During Nationals Park Events.....	17
Figure 6 Post-Game Street Closures and Restrictions During Nationals Park Events	18
Figure 7 Full closure of First Street SE between M Street and N Street (Post-Event Only)	18
Figure 8 Forced Right-Hand Turn from Garage on First Street South of N Street — Post-Event	20
Figure 9 Freeway Closures on Southwest Freeway South (left) and Suitland Parkway East/Anacostia Freeway South – Post-Event	20
Figure 10 Additional Cone Deployment for Enhanced TOPP	21
Figure 11 Audi Field Placard Map (left) and Nationals Park Placard Map (right).....	22
Figure 12 Full Placard Details	23
Figure 13 Signal Timing Intersections and CCTV Locations	24
Figure 14 Traffic Control Staffing Locations at Nationals Park and Audi Field.....	27
Figure 15 Traffic Control Staffing Request Locations at The Wharf	28
Figure 16 Stadium Event Parking Restriction Locations for Audi Field and Nationals Park	30
Figure 17 Stadium Area Off-Street Parking Inventory.....	31
Figure 18 Rideshare Locations for Audi Field Events	34
Figure 19 Preferred Rideshare Pick-Up/Drop-Off Locations for Nationals Park Events.....	35
Figure 20 Metrorail Stations Serving Stadium Area	36
Figure 21 Metrobus Routes C55, D30, and C31	37
Figure 22 Audi Field Limited Mobility Shuttle Route	38
Figure 23 Geofenced Areas around Audi Field and Nationals Park	40
Figure 24 Capital Bikeshare Locations in Stadium Area	41

Tables

Table 1 TOPP Stakeholder Responsibilities	5
Table 2 2025 Scheduled Events at Audi Field and Nationals Park.....	7
Table 3 2025 Events at the Wharf with TCO Support.....	11
Table 4 Other 2025 Special Events that Could Impact Area Roads/Metrorail	11
Table 5 Factors that Trigger Traffic Mitigation Resources for Audi Field.....	12
Table 6 Factors that Trigger Traffic Mitigation Resources for Nationals Park	12
Table 7 2025 Non-MLB Events at Nationals Park	19
Table 8 Variable Message Sign Locations and Messages – Audi Field	25
Table 9 Variable Message Sign Locations and Messages – Nationals Park	26
Table 10 Parking Meter Rates on Days with Stadium Events.....	29
Table 11 Stadium Area Off-Street Parking Inventory.....	32
Table 12 Parking Meter Rates on Days with Stadium Events.....	33
Table 13 Metrobus Routes Serving Stadium Area.....	37

EXECUTIVE SUMMARY

The Traffic Operations and Parking Plan (TOPP) for Audi Field and Nationals Park is a plan to facilitate safe and efficient traffic and transportation operations surrounding both stadiums on days when large events occur. The TOPP is a public document that is updated annually. It is a collaborative effort that involves multiple government agencies and community stakeholders, including:

- **DC Government Agencies:**
 - District Department of Transportation (DDOT)
 - Metropolitan Police Department (MPD)
 - Department of Public Works (DPW)
 - Department for Hire Vehicles (DFHV)
 - Department of Licensing and Consumer Protection (DLCP)
 - Fire and Emergency Management (FEMS)
- **Washington Metropolitan Area Transit Authority (WMATA)**
- **Advisory Neighborhood Commissions:**
 - ANC 6D
 - ANC 8F
- **DC United, Washington Spirit, and DC Defenders**
- **Washington Nationals**
- **The Wharf**
- **Southwest Waterfront and Capitol Riverfront BIDs**

The TOPP aims to achieve the following goals:

- Minimize the impact of parking and traffic on residents of neighboring areas, businesses, and commuter of neighboring areas;
- Reduce pedestrian-vehicular conflicts at intersections;
- Maximize the use of Metrorail and Metrobus and encourage the use of non-motorized transportation modes;
- Manage pick-up and drop-off activity of rideshare vehicles;
- Provide a framework for the enforcement of all parking and traffic restrictions; and
- Provide information to help get patrons to and from the stadiums efficiently.

Attaining these goals requires collaboration between all stakeholders to develop an effective plan and execute the plan on event days by dedicating the right level of resources. The responsibilities of each stakeholder are shown in **Table 1**.

Table 1 | TOPP Stakeholder Responsibilities

Stakeholders	TOPP Functions	Event Day Resources Deployed
District Department of Transportation (DDOT)	<ul style="list-style-type: none"> Manage traffic and pedestrian flow 	<ul style="list-style-type: none"> Traffic Control Officers (TCO) Traffic signal engineers Traffic Management Center (TMC) operators Roadway Operations Patrol (ROP)
Metropolitan Police Department (MPD)	<ul style="list-style-type: none"> Ensure public safety and enact street closure 	<ul style="list-style-type: none"> Police officers
Department of Public Works (DPW)	<ul style="list-style-type: none"> Enforce parking restrictions and towing 	<ul style="list-style-type: none"> Parking enforcement officers Tow trucks
Department for Hire Vehicles (DFHV)	<ul style="list-style-type: none"> Manage and enforce For Hire Vehicle operations 	<ul style="list-style-type: none"> DFHV Enforcement Officers
Department of Licensing and Consumer Protection (DLCP)	<ul style="list-style-type: none"> Licensing to vendors 	<ul style="list-style-type: none"> Inspections as needed
Fire and Emergency Management Services (FEMS)	<ul style="list-style-type: none"> Ensuring emergency response 	<ul style="list-style-type: none"> FEMS personnel as needed
Washington Metropolitan Area Transportation Operations (WMATA)	<ul style="list-style-type: none"> Operating Metrobus and Metrorail service 	<ul style="list-style-type: none"> Game day bus and Metro service
Advisory Neighborhood Commissions (ANC)	<ul style="list-style-type: none"> Offering community outreach and input 	
Capitol Waterfront Business Improvement District	<ul style="list-style-type: none"> Offering community outreach and input 	<ul style="list-style-type: none"> Clean Team staff
Southwest Business Improvement District	<ul style="list-style-type: none"> Offering community outreach and input 	<ul style="list-style-type: none"> Ambassadors
Washington Nationals	<ul style="list-style-type: none"> Planning TOPP Offering outreach to patrons Developing game schedule Developing anticipated game day attendance Closing of Half Street SE Parking garage ingress and egress 	<ul style="list-style-type: none"> Barricades and personnel for closure of Half Street SE Parking staff
DC United	<ul style="list-style-type: none"> Planning TOPP Offering outreach to patrons Developing game schedule Developing anticipated game day attendance 	<ul style="list-style-type: none"> Barricades and personnel for closure of First and S Streets SW Parking staff

The TOPP is a dynamic document that is continually edited and updated to reflect new information and changes in circumstances. By collaborating and regularly updating the TOPP, government agencies and stakeholders can ensure that travel to and from Audi Field and Nationals Park is safe and efficient, and the impact of events on neighboring communities is minimized.

The TOPP applies to the Stadium Event Zone, which is the immediate TOPP boundary where District resources are focused, as well as the Broader Impact Area, where signal timing plans are implemented and limited District personnel resources are deployed. See **Figure 1** for details.

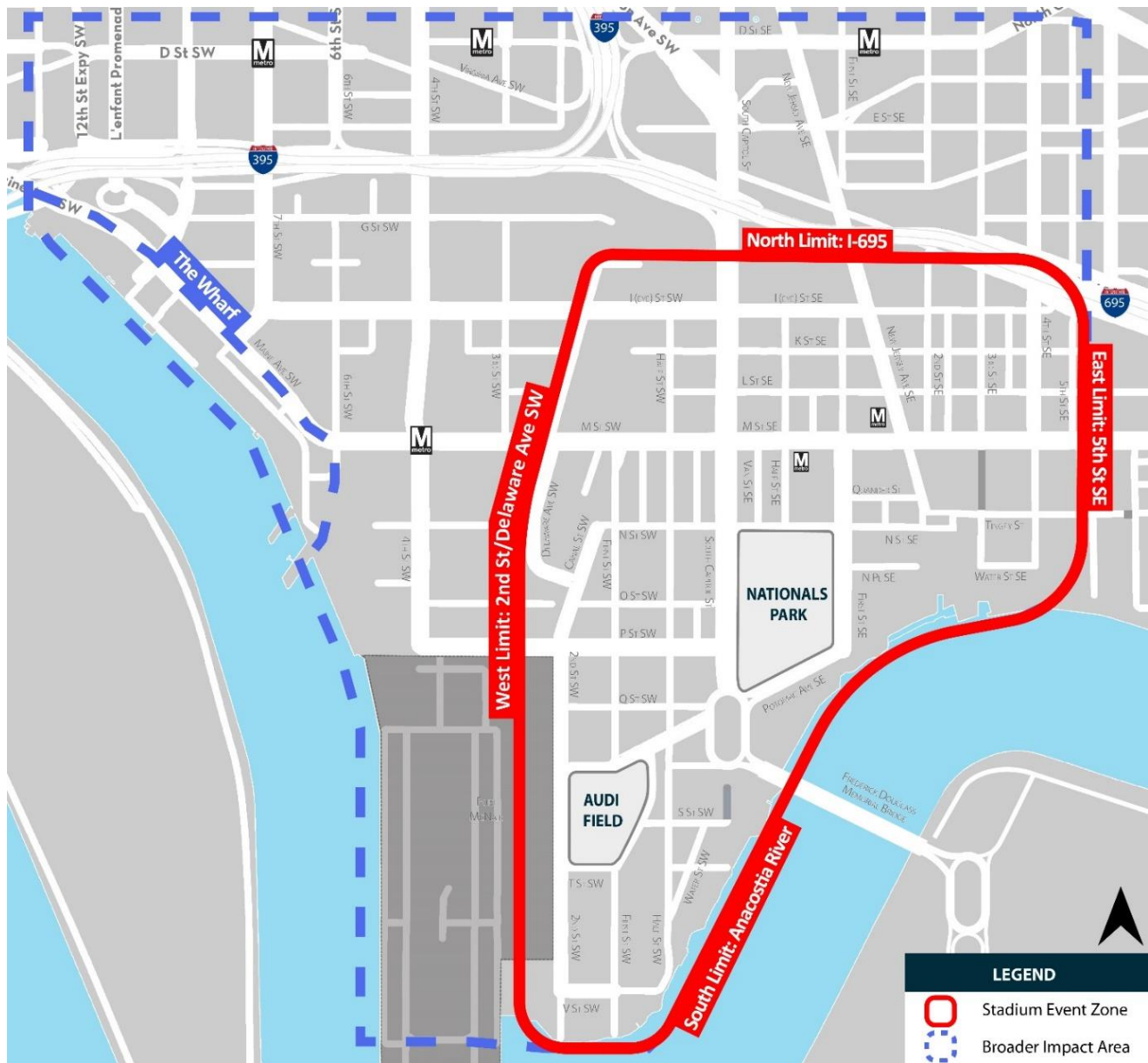


Figure 1 | Stadium Event Zone and Broader Impact Area

STADIUM SCHEDULES

Table 2 lists all of the events scheduled at Nationals Park and Audi Field in 2025. For all sport events, the start time refers to the scheduled time of first pitch or kick-off. Scheduled dates and start times are subject to change due to inclement weather and other factors. **Yellow shading** indicates days with events scheduled at both Audi Field and Nationals Park.

Table 2 | 2025 Scheduled Events at Audi Field and Nationals Park

Date	Day of Week	Nationals Park		Audi Field	
		Event	Start Time	Event	Start Time
March 15	Saturday	vs. New York Mets	6:05 PM	DC United vs. CF Montreal	7:30 PM
March 16	Sunday	vs. Tampa Bay Rays	1:05 PM		
March 17	Monday	vs. St. Louis Cardinals	1:05 PM		
March 20	Thursday	vs. New York Mets	6:05 PM		
March 21	Friday	vs. Miami Marlins	6:05 PM		
March 22	Saturday			Washington Spirit vs. Kansas City Current	7:30 PM
March 23	Sunday	vs. Houston Astros	12:05 PM	DC Power FC vs. Brooklyn FC	2:00 PM
March 24	Monday	vs. Baltimore Orioles	1:05 PM		
March 27	Thursday	vs. Philadelphia Phillies	4:05 PM		
March 28	Friday			Washington Spirit vs. Bay FC	7:30 PM
March 29	Saturday	vs. Philadelphia Phillies	4:05 PM	DC United vs. Columbus Crew	7:30 PM
March 30	Sunday	vs. Philadelphia Phillies	1:35 PM	DC Defenders vs. Birmingham Stallions	3:00 PM
April 04	Friday	vs. Arizona Diamondbacks	6:45 PM		
April 05	Saturday	vs. Arizona Diamondbacks	4:05 PM	DC Defenders vs. Memphis Showboats	8:00 PM
April 06	Sunday	vs. Arizona Diamondbacks	1:35 PM		
April 07	Monday	vs. Los Angeles Dodgers	6:45 PM		
April 08	Tuesday	vs. Los Angeles Dodgers	6:45 PM	DC Power FC vs. Carolina Ascent FC	7:30 PM
April 09	Wednesday	vs. Los Angeles Dodgers	4:05 PM		
April 12	Saturday			DC United vs. FC Cincinnati	7:30 PM
April 18	Friday			DC Power FC vs. Tampa Bay Sun FC	7:30 PM
April 20	Sunday			DC Defenders vs. San Antonio Brahmas	5:00 PM
April 22	Tuesday	vs. Baltimore Orioles	6:45 PM		
April 23	Wednesday	vs. Baltimore Orioles	6:45 PM		
April 24	Thursday	vs. Baltimore Orioles	6:45 PM		
April 25	Friday	vs. New York Mets	6:45 PM		
April 26	Saturday	vs. New York Mets	4:05 PM	Washington Spirit vs. NJ/NY Gotham FC	7:30 PM

Date	Day of Week	Nationals Park		Audi Field	
		Event	Start Time	Event	Start Time
April 27	Sunday	vs. New York Mets	1:35 PM		
April 28	Monday	vs. New York Mets	4:05 PM		
May 02	Friday			Washington Spirit vs. Angel City FC	8:00 PM
May 03	Saturday			DC United vs. Colorado Rapids	7:30 PM
May 05	Monday	vs. Cleveland Guardians	6:45 PM		
May 06	Tuesday	vs. Cleveland Guardians	6:45 PM		
May 07	Wednesday	vs. Cleveland Guardians	12:05 PM		
May 08	Thursday			DC Power FC vs. Dallas Trinity FC	7:30 PM
May 09	Friday	vs. St. Louis Cardinals	6:45 PM		
May 10	Saturday	vs. St. Louis Cardinals	4:05 PM		
May 11	Sunday	vs. St. Louis Cardinals	1:35 PM		
May 13	Tuesday			DC Power FC vs. Spokane Zephyr	7:30 PM
May 14	Wednesday			DC United vs. New York City FC	7:30 PM
May 17	Saturday			Washington Spirit vs. Utah Royals FC	7:30 PM
May 18	Sunday			DC Defenders vs. Arlington Renegades	12:00 PM
May 20	Tuesday	vs. Atlanta Braves	6:45 PM	DC Power FC vs. Fort Lauderdale United FC	7:30 PM
May 21	Wednesday	vs. Atlanta Braves	6:45 PM		
May 22	Thursday	vs. Atlanta Braves	6:45 PM		
May 23	Friday	vs. San Francisco Giants	6:45 PM		
May 24	Saturday	vs. San Francisco Giants	4:05 PM	DC United vs. New York Red Bulls	7:30 PM
May 25	Sunday	vs. San Francisco Giants	1:35 PM		
May 28	Wednesday			DC United vs. New England Revolution	7:30 PM
May 30	Friday			DC Defenders vs. St. Louis Battlehawks	8:00 PM
June 03	Tuesday	vs. Chicago Cubs	6:45 PM		
June 04	Wednesday	vs. Chicago Cubs	6:45 PM		
June 05	Thursday	vs. Chicago Cubs	6:45 PM		
June 06	Friday	vs. Texas Rangers	6:45 PM		
June 07	Saturday	vs. Texas Rangers	4:05 PM	DC United vs. Chicago Fire FC	7:30 PM
June 08	Sunday	vs. Texas Rangers	1:35 PM	Washington Spirit vs. North Carolina Courage	4:00 PM
June 13	Friday	vs. Miami Marlins	6:45 PM		
June 14	Saturday	vs. Miami Marlins	4:05 PM		
June 15	Sunday	vs. Miami Marlins	1:35 PM		

Date	Day of Week	Nationals Park		Audi Field	
		Event	Start Time	Event	Start Time
June 16	Monday	vs. Colorado Rockies	6:45 PM		
June 17	Tuesday	vs. Colorado Rockies	6:45 PM		
June 18	Wednesday	vs. Colorado Rockies	6:45 PM	FIFA Club World Club Match #1: Al Ain vs. Juventus	9:00 PM
June 19	Thursday	vs. Colorado Rockies	1:05 PM		
June 22	Sunday			FIFA Club World Club Match #2: Salzburg vs. Al Hilal	6:00 PM
June 26	Thursday			FIFA Club World Club Match #3: Wydad AC vs. Al Ain	1:00 PM
June 28	Saturday			DC United vs. Nashville SC	7:30 PM
July 01	Tuesday	vs. Detroit Tigers	6:45 PM		
July 02	Wednesday	vs. Detroit Tigers	6:45 PM		
July 03	Thursday	vs. Detroit Tigers	6:45 PM		
July 04	Friday	vs. Boston Red Sox	11:05 AM		
July 05	Saturday	vs. Boston Red Sox	4:05 PM	DC United vs. Atlanta United FC	7:30 PM
July 06	Sunday	vs. Boston Red Sox	1:35 PM		
July 18	Friday	vs. San Diego Padres	6:45 PM		
July 19	Saturday	vs. San Diego Padres	6:45 PM		
July 20	Sunday	vs. San Diego Padres	1:35 PM		
July 21	Monday	vs. Cincinnati Reds	6:45 PM		
July 22	Tuesday	vs. Cincinnati Reds	6:45 PM		
July 23	Wednesday	vs. Cincinnati Reds	12:05 PM		
July 26	Saturday			DC United vs. Austin FC	7:30 PM
August 01	Friday	vs. Milwaukee Brewers	6:45 PM		
August 02	Saturday	vs. Milwaukee Brewers	4:05 PM		
August 03	Sunday	vs. Milwaukee Brewers	1:35 PM	Washington Spirit vs. Portland Thorns	12:30 PM
August 05	Tuesday	vs. Oakland Athletics	6:45 PM		
August 06	Wednesday	vs. Oakland Athletics	6:45 PM		
August 07	Thursday	vs. Oakland Athletics	12:05 PM		
August 14	Thursday	vs. Philadelphia Phillies	6:45 PM		
August 15	Friday	vs. Philadelphia Phillies	6:45 PM	Washington Spirit vs. Racing Louisville FC	8:00 PM
August 16	Saturday	vs. Philadelphia Phillies	4:05 PM		
August 17	Sunday	vs. Philadelphia Phillies	11:35 AM		
August 19	Tuesday	vs. New York Mets	6:45 PM		
August 20	Wednesday	vs. New York Mets	6:45 PM		

Date	Day of Week	Nationals Park		Audi Field	
		Event	Start Time	Event	Start Time
August 21	Thursday	vs. New York Mets	4:05 PM		
August 23	Saturday			DC United vs. Inter Miami CF	7:30 PM
August 29	Friday	vs. Tampa Bay Rays	6:45 PM		
August 30	Saturday	vs. Tampa Bay Rays	4:05 PM		
August 31	Sunday	vs. Tampa Bay Rays	1:35 PM	Washington Spirit vs. Chicago Red Stars	4:00 PM
September 01	Monday	vs. Miami Marlins	1:05 PM		
September 02	Tuesday	vs. Miami Marlins	6:45 PM		
September 03	Wednesday	vs. Miami Marlins	1:05 PM		
September 07	Sunday			Washington Spirit vs. Seattle Reign FC	4:00 PM
September 12	Friday	vs. Pittsburgh Pirates	6:45 PM		
September 13	Saturday	vs. Pittsburgh Pirates	4:05 PM	DC United vs. Orlando City SC	7:30 PM
September 14	Sunday	vs. Pittsburgh Pirates	1:35 PM		
September 15	Monday	vs. Atlanta Braves	6:45 PM		
September 16	Tuesday	vs. Atlanta Braves	6:45 PM		
September 17	Wednesday	vs. Atlanta Braves	4:05 PM		
September 26	Friday	vs. Chicago White Sox	6:45 PM		
September 27	Saturday	vs. Chicago White Sox	4:05 PM	DC United vs. Philadelphia Union	7:30 PM
September 28	Sunday	vs. Chicago White Sox	3:05 PM	Washington Spirit vs. Houston Dash	1:00 PM
October 04	Saturday			DC United vs. Charlotte FC	2:30 PM
October 05	Sunday			Washington Spirit vs. San Diego Wave FC	1:00 PM
October 18	Saturday			Washington Spirit vs. Orlando Pride	12:30 PM

WHARF EVENTS

Table 3 provides a list of special events at the Wharf in 2025 for which DDOT's Traffic Control Officers (TCOs) will be provided. Additional events may be added throughout the year, including concerts at the Anthem. DDOT works with other District agencies and the Wharf to address traffic impacts associated with large public events.

Table 3 | 2025 Events at the Wharf with TCO Support

Date	Day of Week	Wharf Event	Same Day as Audi Field or Nationals Park Event?
March 1	Saturday	Mardi Gras	Yes, Audi Field
March 15	Saturday	Ireland at The Wharf	Yes, both stadiums
March 29	Saturday	Bloomaroo at the Home of the Cherry Blossoms	Yes, both stadiums
December 06	Saturday	Holiday Boat Parade & Party	No

OTHER SPECIAL EVENTS THAT COULD IMPACT AREA ROADS/METRORAIL

Table 4 identifies other special events scheduled to take place in the District that could impact roadway traffic, Metrorail ridership, and potentially limit resources available for Audi Field and Nationals Park traffic control support.

Table 4 | Other 2025 Special Events that Could Impact Area Roads/Metrorail

Date(s)	Day(s) of Week	Event
March 15	Saturday	Rock'n'Roll Washington DC
March 20 - April 13	All days	Cherry Blossom Festival
April 5	Saturday	Petalpalooza at Capitol Riverfront
April - November	Saturdays	Farmers Market SW
May - September	Fridays	Market SW
July 4	Friday	Independence Day
October 12	Sunday	Army Ten Miler
October 26	Sunday	Marine Corps Marathon

BASE AND ENHANCED TOPPS

The District employs **two (2) operational plans** for Audi Field and Nationals Park based on the anticipated transportation impacts associated with varying attendance levels and the day of week/time of day:

- A **Base** TOPP largely follows the game day procedures and staffing levels for normal games with low to moderate levels of attendance.
- An **Enhanced** TOPP is employed for games with high levels of attendance and for weekday afternoon games that conclude during the standard weekday evening rush hour.

Table 5 and **Table 6** show the factors that trigger various levels of traffic mitigation resources for Audi Field and Nationals Park.

Table 5 | Factors that Trigger Traffic Mitigation Resources for Audi Field

	All Days/Times	
TOPP Plan	Base	Enhanced
Anticipated Attendance	7.5K - 15K	> 15K

Table 6 | Factors that Trigger Traffic Mitigation Resources for Nationals Park

	Weekday Afternoon ¹		Other Times	
TOPP Plan	Base	Enhanced	Base	Enhanced
Anticipated Attendance	≤ 25K	> 25K	≤ 35K	> 35K

¹Excludes July 4 Low attendance events at Audi Field (< 7,500 spectators) will not have any specific event-day TOPP measures.

Attendance projections will be provided by the Washington Nationals to key stakeholders in advance of all home games and other stadium events to allow for an appropriate allocation of staffing and other resources. Attendance projections will be provided by DC United through monthly staffing requests, with revisions provided the week of the event.

Presented in the following sections are the details for the Base and Enhanced TOPPs for each type of operational undertaking.

ACTIVE SPECIAL EVENTS MANAGEMENT

Since 2023, traffic operations issues are reported to DDOT's Traffic Management Center (TMC) via phone call. Described below is the plan to effectively contact field supervisors responsible for stakeholder staff (including but not limited to DDOT, MPD, DPW, and DFHV) that enforce traffic rules and regulations, as well as help direct patrons to appropriate parking areas and reduce traffic congestion.

Pre-Event:

1. Contact field supervisors responsible for staff members from agency stakeholders who will be working during the event.
2. Send an email to and/or call each field supervisor, explaining the purpose of the communication.
3. Discuss any important items specific for that event.
4. Confirm the field supervisor's understanding of their role and responsibilities during the event.

During an Event:

1. Check in with supervisors via MGHTZ Radios/Teams Messaging.
2. If any issues arise, immediately notify the appropriate field supervisor and provide guidance on how to address the issue.
3. Maintain regular communication with field supervisors throughout the event to ensure that traffic rules and regulations are being effectively enforced and that patrons are being directed to appropriate parking areas.

Post-Event:

1. Follow up with each field supervisor via email or phone to debrief on the event and gather feedback.
2. Review the effectiveness of the TOPP strategies for reducing traffic congestion and identify areas for improvement.

3. Provide additional training or support to field supervisors and staff members, as needed, to improve performance in future events.

Traffic Management Center (TMC) Internal Process

The TMC will follow a three-step process, which is described below and illustrated in **Figure 2**.

1. **COLLECT:** The first step in the process is when a person notices a traffic operations issue and contacts the TMC via phone call or email. During this step, the TMC staff will ask the person for details about the issue, such as the location and nature of the problem. The TMC staff will also collect the contact information of the person reporting the issue. This step is crucial as it ensures that the TMC has accurate information to properly address the issue and the person reporting the issue can be contacted later for any necessary follow-up.
2. **REPORT:** Once the information is collected, the TMC staff person will use a list of contacts to call the appropriate on-call lead from DDOT, DPW, MPD, DFHV, FEMS, WMATA, etc. to address the issue.
3. **FOLLOW UP:** After the appropriate supervisor is contacted, they will address the issue and follow up with the person who originated the phone call or email to provide updates on the status of the issue and any actions taken to resolve it.

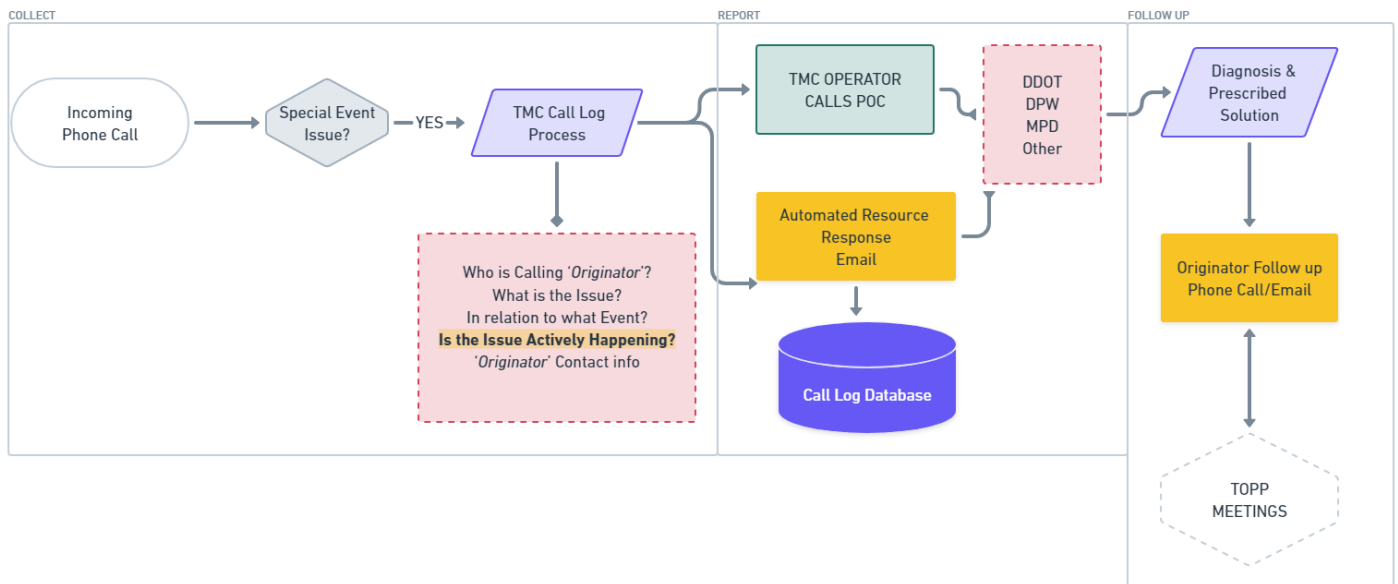


Figure 2 | Communication Process Flowchart

TMC Contact Information

Phone: (202) 671-3368

STREET CLOSURES & RESTRICTIONS

AUDI FIELD

Pre-Game Traffic Restrictions

Figure 3 Figure 3 shows the closures on First Street SW and S Street SW, as well as the traffic flow from South Capitol Street to the surrounding area. The closures in effect prior to events at Audi Field are:

- M Street and Half Street SW – no vehicles are permitted south of M Street SW;
- M Street and First Street SW – no vehicles are permitted south of M Street SW;
- First Street SW between Potomac Avenue and T Street SW; and
- S Street SW between First Street and Half Street SW.

For all events, First Street SW between Potomac Avenue and T Street SW and S Street SW between First Street and Half Street SW are expected to be closed up to (6) hours prior to the start of the event. S Street SW between First Street and Half Street SW will still be accessible to pedestrians and can be used to stage emergency and fire department vehicles that may need direct access to the stadium. Audi Field is responsible for activating the closure by deploying barricades.



Figure 3 | Pre-Game Street Closures and Restrictions During Audi Field Events

Post-Game Traffic Restrictions

MPD will post officers at several locations post-game to restrict vehicles from entering the stadium area or to deconflict turning vehicles and pedestrians. These locations are shown in **Figure 4** and described below.

- Potomac Avenue SW – no vehicles permitted west of South Capitol Street;
- Q Street SW – no vehicles permitted between Second Street SW and South Capitol Street except for residents with placards; and
- R Street SW – no vehicles permitted between Second Street and First Street SW.

For all events, First Street SW between Potomac Avenue and T Street SW and S Street SW between First Street and Half Street SW are expected to be closed up to (3) hours after the end of the event. S Street SW between First Street and Half Street SW will still be accessible to pedestrians and can be used to stage emergency and fire department vehicles that may need direct access to the stadium. The Audi Field is responsible for activating the closure by deploying barricades.

Please note that First Street SW may remain closed up to 48 hours only if Audi Field has scheduled events on two (or more) consecutive days. S Street SW should remain open to the public during the extended closure of First Street SW mentioned in this paragraph. To reserve public parking spaces on S Street SW for an extended time outside the pre- and post-game restrictions, a public parking permit is required.

As in 2024, the Q Street SW access from the South Capitol Street oval will serve as a resident access point. An MPD officer will be stationed on Q Street SW and will allow residents with **2025 Audi Field Resident Access Placard (RAP)** to continue west on Q Street SW. Once a resident has passed through the access point, they should drive west on Q Street SW and turn south on Second Street SW to reach their residence south of Audi Field.

South Capitol Street Oval Lane Closures – Post-Event

After events at Audi Field, traffic will not be permitted to travel northbound on South Capitol Street at the western oval. This closure, shown in **Figure 4**, will force traffic entering the oval from R Street SW and South Capitol Street to continue across the Frederick Douglass Memorial Bridge.

- All lanes of N Street SE closed between First Street and New Jersey Avenue SE;
- All lanes of First Street SE closed between M Street and N Street;
- The Frederick Douglass Memorial Bridge closed to northbound traffic; and
- No left-turn from New Jersey Avenue SE to M Street SE.



Figure 5 | Pre-Game Street Closures and Restrictions During Nationals Park Events

South Capitol Street Oval Lane Closures – Post-Event

After events at Nationals Park, traffic will not be permitted to travel northbound on South Capitol Street from the western oval. ROP will drop 25 cones to prevent traffic from leaving the oval in the northbound direction on South Capitol Street (see **Figure 6**). Additional traffic cones will be placed within the oval to allow traffic entering from westbound Potomac Avenue SE to continually flow towards the Frederick Douglass Memorial Bridge.



Figure 6 | Post-Game Street Closures and Restrictions During Nationals Park Events

In **Figure 7**, Resident/Special Access refers to residents of buildings on a restricted or closed street, charter buses, disabled patrons of events at Nationals Park, and parking permit holders for a garage on a restricted or closed street. DDOT distributes parking placards each year for residential access.



Figure 7 | Full closure of First Street SE between M Street and N Street (Post-Event Only)

For baseball games and other major stadium events, the Nationals utilize moveable barriers to prevent motor vehicles from traveling on N Street SE between Cushing Alley SE and Garage B (Geico Garage). The Nationals are responsible for barrier deployment, removal, and emergency openings if needed.

These locations are designated as Special Event Areas and may be closed to non-emergency vehicular traffic starting up to three (3) hours before baseball games or other special events and continue until two (2) hours after the end of games/events.

Residents who need vehicle access to 1221 Van, Dock 79, First Residences, Maren, Kelvin, or West Half during Nationals Park events will show their placards to MPD officers or DDOT traffic control staff stationed on First Street, Cushing Place, Van Street and M Street SE. This information will be relayed at pre-game roll call meetings.

In addition to baseball games, several special events as shown in **Table 7** will require limited street closures as follows:

- N Street SE between Cushing Place SE and Van Street SE; and
- Half Street SE between M Street SE and N Street SE.

Table 7 | 2025 Non-MLB Events at Nationals Park

Date	Day of Week	Event	Gate Time	Street Closure Start Time	Street Closure End Time
April 12	Saturday	DC Beer Fest	10:00 a.m.	10:00 a.m.	8:30 p.m.
April 19	Saturday	Uncorked: DC	TBD	TBD	TBD
June 27	Friday	Savannah Bananas Baseball	TBD	TBD	TBD
June 28	Saturday	Savannah Bananas Baseball	TBD	TBD	TBD
May 31	Saturday	Shakira Concert	5:30 p.m.	TBD	TBD
June 23	Monday	Stray Kids World Tour	6:00 p.m.	TBD	TBD
September 6	Saturday	The Lumineers: The Automatic World Tour	4:30 p.m.	TBD	TBD

POST-GAME ROADWAY RECONFIGURATIONS

NATIONALS PARK

Lane Configuration on First Street SE South of N Street SE

Following baseball games and other events at Nationals Park, traffic cones will be positioned to institute a forced right-hand turn from Garage C, as shown in **Figure 8**.

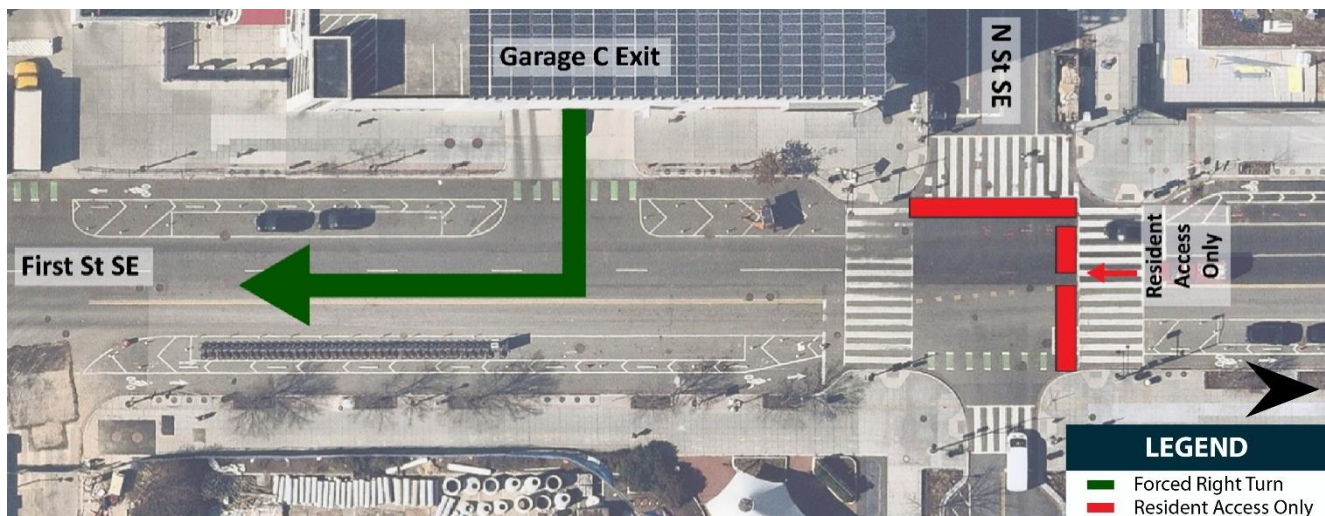


Figure 8 | Forced Right-Hand Turn from Garage on First Street South of N Street — Post-Event

Highway Lane Closures - Post-Event

ROP staff will implement lane reductions and closures during the eighth inning of games to expedite the merge onto the freeways during the post-game period. Locations for both the Base and Enhanced plans are described below:

Base TOPP

- Westbound I-295 Exit 4 to Suitland Parkway/South Capitol Street will be blocked (both exits);
- On Suitland Parkway just north of ramp to northbound I-295, all traffic will be sent north on I-295; and
- Eastbound I-695 Exit 1A to South Capitol Street will be blocked.

See

Figure 9 for details.

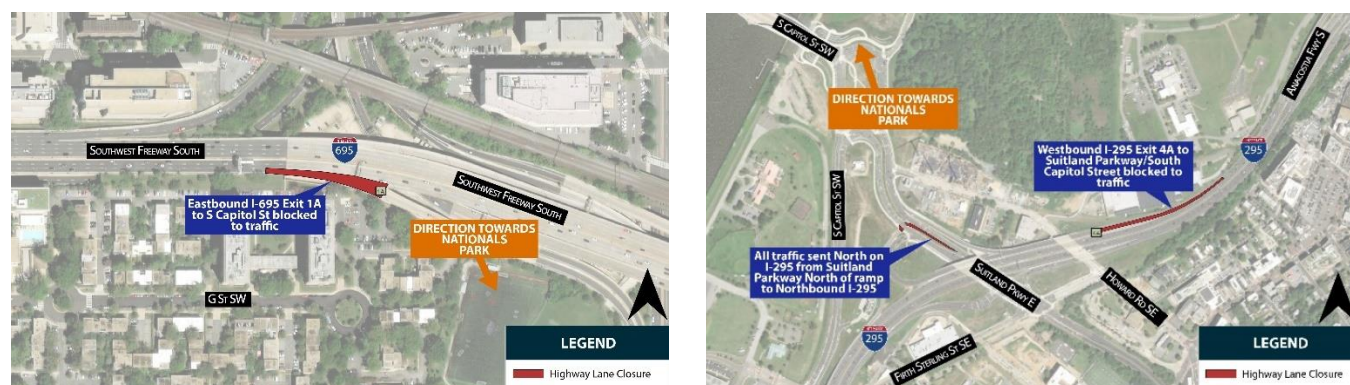


Figure 9 | Freeway Closures on Southwest Freeway South (left) and Suitland Parkway East/Anacostia Freeway South — Post-Event

In addition to implementing freeway tapers, ROP will drop cones on M Street at New Jersey Avenue SE to prevent left turns. ROP will also drop cones on the northbound service lane of South Capitol Street at the north leg of N Street SE, and in the median of South Capitol Street at O Street and P Street SW to prevent turns from South Capitol Street into the neighborhood.

Finally, ROP staff will assist MPD with traffic control at the intersection Firth Sterling Ave and Suitland Parkway SE after events to direct motorists to I-295 North.

Additional Locations for Enhanced TOPP

For the Enhanced TOPP, at the beginning of the eighth inning of Nationals games ROP will drop cones at the following intersections to reduce possible turn movements (see **Figure 10**):

- South Capitol Street at O Street (cones in between the two medians);
- South Capitol Street at P Street (cones in between the two medians);
- Alley south of Public Storage (1230 South Capitol Street SE) to block access to Van Street;
- M Street SE at Cushing Place (cones in between the two medians);
- Turn lane from M Street to southbound Half Street SW (cone off turn lane);
- On-ramp to northbound South Capitol Street from M Street;
- Turn lane from M Street to northbound Half Street SW (cone off turn lane);
- On-ramp to southbound South Capitol Street from M Street;
- M Street SE at Second Street SE (cones between the two medians); and
- Quander Street at New Jersey Avenue SE (blocking westbound access to Quander Street SE).



Figure 10 | Additional Cone Deployment for Enhanced TOPP

RESIDENTIAL ACCESS PLACARDS

Residents of buildings adjacent to Audi Field or Nationals Park will receive a placard that grants them access to closed roads on event days. Starting in 2023, there are separate placards for residents of buildings near Audi Field and residents of buildings near Nationals Park. These two (2) placards have different access privileges, which are shown in **Figure 11** and **Figure 12** and described below. If a resident or guest does not have a placard with them, they may speak with the MPD officer stationed at the access point to gain access.

- Residents of RiverPoint, Peninsula 88, and Watermark buildings may present their placards at the access on Q Street SW to reach their residence; and
- Residents of 1221 Van, 1211 Van, West Half, Kelvin, F1RST, Dock 79, and Maren buildings may present their placards at the access points on Van Street SE, Cushing Place SE, or First Street SE to reach their residence.

The recommended driving routes to reach each residential building are shown on the maps and described in text beneath the map on the back of the placards.





Figure 12 | Full Placard Details

TRAFFIC SIGNAL TIMING

AUDI FIELD AND NATIONALS PARK

Signal timing strategies will be implemented for both Audi Field and Nationals Park events to facilitate vehicular and pedestrian movements on the surrounding street network. This is monitored through DDOT's network of CCTV cameras located around Audi Field and along all approaches throughout the area. Special pre- and post-game signal timings are used along major ingress and egress corridors to and from both stadiums. Due to the added volume of vehicular and pedestrian traffic, traffic signal cycle lengths and splits are adjusted to increase the capacity of these movements to help mitigate delays. See **Figure 13** for full map of traffic signal activation and CCTV intersections.

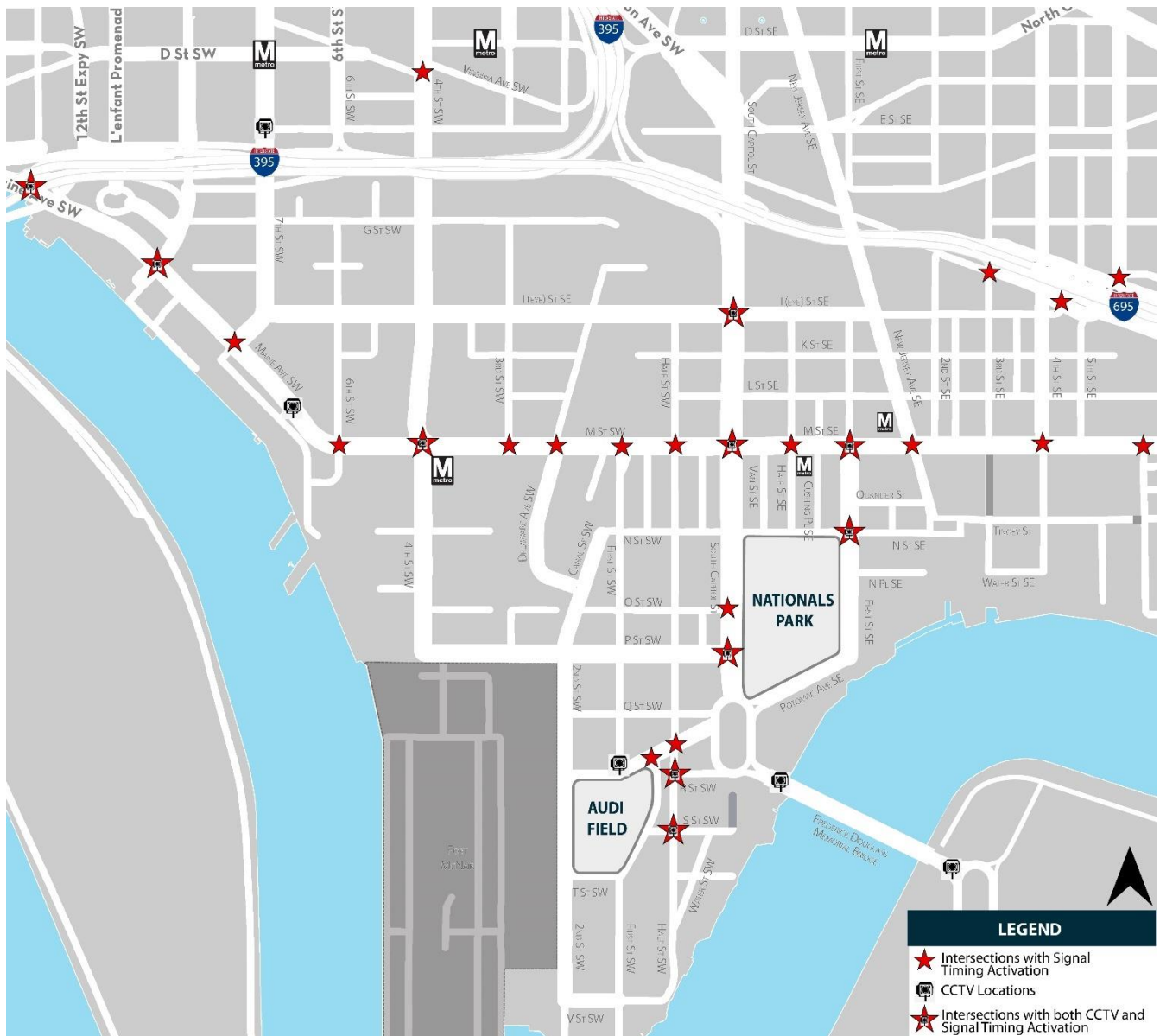


Figure 13 | Signal Timing Intersections and CCTV Locations

Pre-game signal timings are implemented two (2) hours ahead of scheduled events at both stadiums and can be adjusted in real-time to reflect the changing street conditions due to volumes or any associated incident. During the event, signal timings are reduced to normal, time-of-day schedules, so as not to impede traffic flow. Post-game signal timings would last up to 1.5 hour after the end of the event to move pedestrian and vehicular traffic away from the stadiums. Throughout the post-game window, signal timings are gradually reduced based upon observed traffic volumes and pedestrian disbursement. When traffic movements have returned to normal pre-event levels, all traffic signal timings are restored to their normal time-of-day schedules.

VARIABLE MESSAGE SIGNAGE (VMS)

AUDI FIELD

For DC United games at Audi Field, DDOT will display messages on northbound I-395 variable message sign (VMS) boards directing soccer stadium traffic to exit at South Capitol Street (Exit 1A), with the goal of dissuading drivers from exiting I-395 at Maine Avenue. These messages will be displayed two (2) hours prior to scheduled DC United game start times. Locations and VMS messages are shown in **Table 8**.

Table 8 | Variable Message Sign Locations and Messages – Audi Field

DMS ID	Location	Travel Direction	Message
9100	I-395 NB General Purpose Lanes (VA side of 14th Street Bridge)	NB	SPECIAL EVENTS NAVY YARD EXPECT DELAYS USE METRO.
9101	I-395 NB HOV Lanes (VA side of 14th Street Bridge)	NB	SPECIAL EVENTS NAVY YARD EXPECT DELAYS USE METRO.
6007	Southwest Freeway (I-395 EB) west of South Capitol Street SW	EB	SPECIAL EVENTS NAVY YARD EXPECT DELAYS USE METRO.
7097	DC-295 South of Eastern Ave NE (SB)	SB	SPECIAL EVENTS NAVY YARD EXPECT DELAYS USE METRO.
7022	Anacostia Freeway (DC-295 SB) between M PL and M Street SE	SB	SPECIAL EVENTS NAVY YARD EXPECT DELAYS USE METRO.
8016	Anacostia Freeway (I-295 NB) south of Firth Sterling Ave SE	NB	SPECIAL EVENTS NAVY YARD EXPECT DELAYS USE METRO.
5094	New York Ave East of South Dakota Ave NE (WB)	WB	SPECIAL EVENTS NAVY YARD EXPECT DELAYS USE METRO.

NATIONALS PARK

DDOT's TMC activates VMS boards two (2) hours prior to scheduled Nationals baseball game start times. Seven (7) permanent VMS boards are activated for each game. Locations and VMS messages are shown in **Table 9**. Note that Exit 1A on I-695 was omitted from the VMS messages due to heavy traffic on South Capitol Street and impacts of exiting traffic on the intersection of South Capitol Street at M Street.

Table 9 | Variable Message Sign Locations and Messages – Nationals Park

SDMS ID	Location	Travel Direction	Message
9100	I-395 NB General Purpose Lanes (VA side of 14th Street Bridge)	NB	NATS BALLPARK USE I-695 EXIT 1B
9101	I-395 NB HOV Lanes (VA side of 14th Street Bridge)	NB	NATS BALLPARK USE I-695 EXIT 1B
6007	Southwest Freeway (I-395 EB) west of South Capitol Street SW	EB	NATS BALLPARK USE EXIT 1B
7097	DC-295 south of Eastern Ave NE (SB)	SB	NATS BALLPARK I-295 to EXIT 4B
7022	Anacostia Freeway (DC-295 SB) between M PL and M Street SE	SB	NATS BALLPARK EXIT 4B
8016	Anacostia Freeway (I-295 NB) south of Firth Sterling Ave SE	NB	NATS BALLPARK USE EXIT 3B
5094	New York Ave east of South Dakota Ave NE (WB)	WB	NATS BALLPARK USE I-395 SOUTH

DDOT TRAFFIC CONTROL PERSONNEL

DDOT's traffic control deployment for Audi Field and Nationals Park events consists of a combination of Traffic Control Officers (TCOs), Safety Technicians, and MPD. For events at both stadiums, TCOs should be positioned at their posts 60 minutes prior to the start of the event, unless other instructions are provided.

AUDI FIELD

Traffic control coverage is provided at six (6) posts for the Base TOPP. For the Enhanced TOPP, DDOT's plan calls for staffing coverage at an additional five (5) posts, resources permitting. The personnel locations for each plan are shown in **Figure 14**.

NATIONALS PARK

Traffic control coverage is provided at 17 posts for the Base TOPP. For the Enhanced TOPP, DDOT's plan calls for staffing coverage at an additional 10 posts, resources permitting. The personnel locations for each plan are shown in **Figure 14**.

On days when Audi Field and Nationals Park are in operation and have overlapping events, the Enhanced TOPP will be in effect, but duplicate traffic control coverage will not be provided.

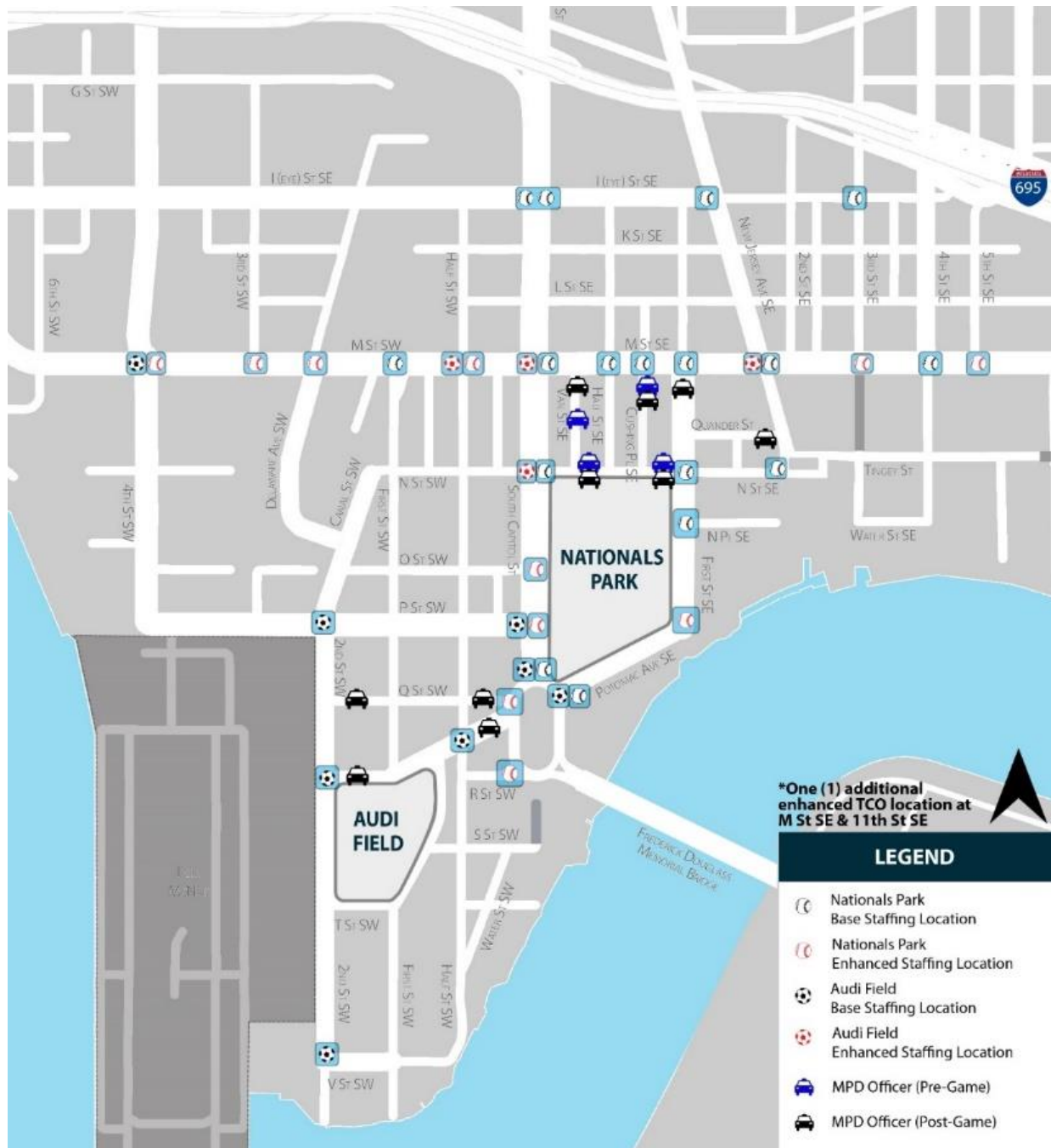


Figure 14 | Traffic Control Staffing Locations at Nationals Park and Audi Field

THE WHARF

Traffic control coverage at the Wharf will be available on a request basis. **Figure 15** shows the locations where DDOT typically deploys TCOs in direct coordination with the Wharf.

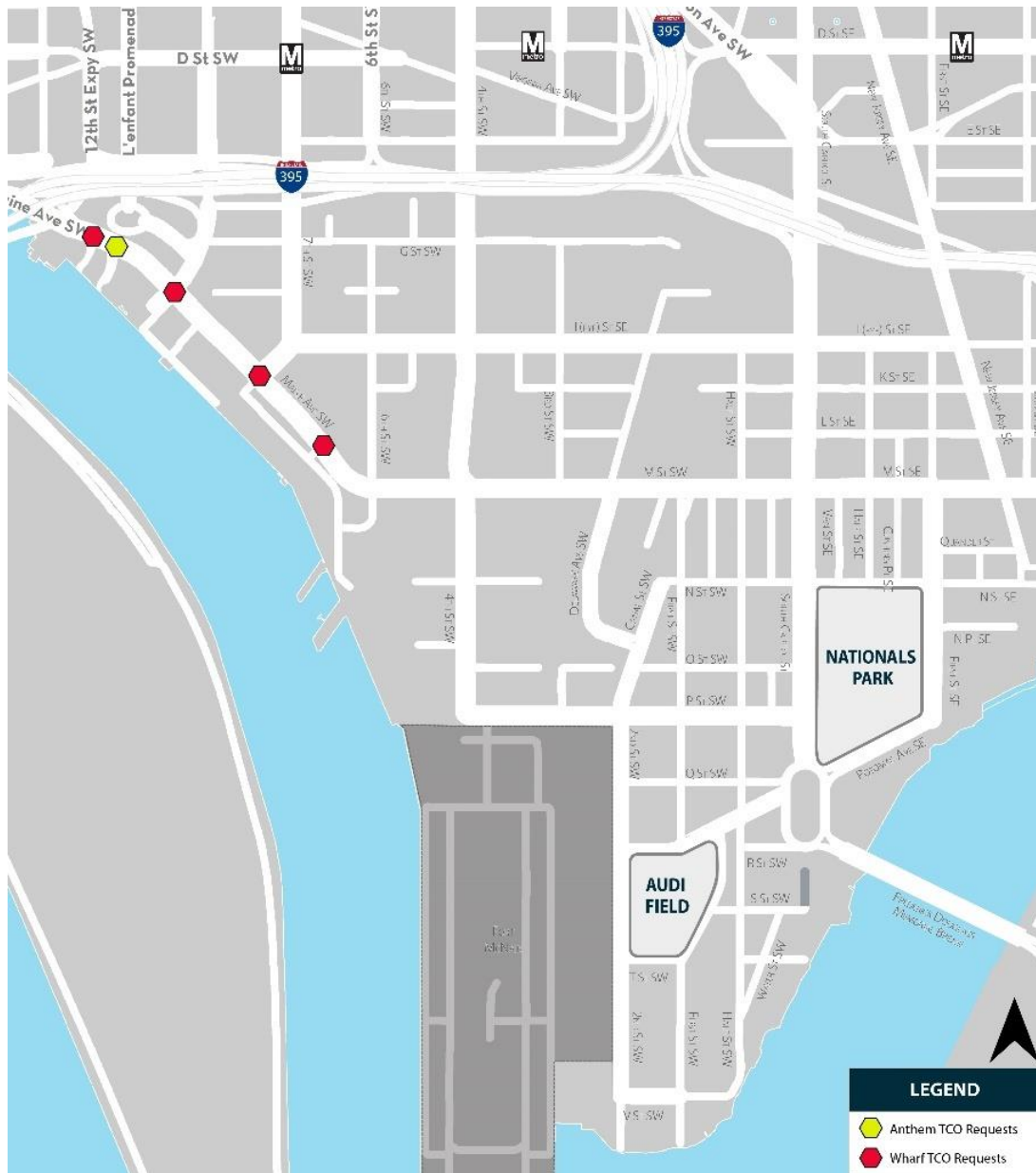


Figure 15 | Traffic Control Staffing Request Locations at The Wharf

PARKING RESTRICTIONS

DDOT has been working to balance the demand for on-street parking in the stadium areas with the safety and access needs of other modes including pedestrians, bicycles, e-scooters, For-Hire Vehicles, and transit. In addition, rapid growth of residential buildings and restaurants in the stadium areas requires a recalibration of the use of public space for curbside parking.

In 2020, DDOT established a Stadium Event Zone covering streets in the immediate vicinity of Nationals Park and Audi Field. The Stadium Event Zone includes the streets within the area bounded by Second Street/Delaware Ave SW, I-695, 5th Street SE, and the Anacostia River.

On all days with Nationals Park and Audi Field events, parking is prohibited within the Stadium Event Zone between 7 a.m. and midnight. Special signs posted on all streets throughout the Stadium Event Zone indicate that parking is prohibited on Stadium Event Days and advise motorists to see parking meters for details. The parking meters in these locations are programed to reinforce the parking restrictions by indicating that parking is not permitted and will not accept payment for parking. On the day of the parking restriction, the multi space meter and meter vendors will display lockout messages indicating “Stadium Event Parking Restriction.” If an event is postponed or rescheduled, meters will revert to their previous programming.

The cleared curbs in the Stadium Event Zone will provide safe loading zone space for the numerous ground floor retailers receiving event-day supplies. Also capitalizing on this cleared curb will be the scores of patrons arriving and departing by way of For-Hire Vehicles, which data indicates spike during events. Having a cleared curb also allows for DDOT’s Enforcement partners at DPW and DFHV to safely engage with offenders while maintaining the flow of traffic, during the issuance of necessary citations.

As shown on **Figure 16**:

- DDOT has designated and scheduled two (2) different Stadium Event Zone parking restrictions for Audi Field and Nationals Park.
- Unless events are taking place at both stadiums on the same day, parking restrictions will be limited to locations associated with the event venue.
- All-day Stadium Event Zone parking restrictions and partial-day parking restrictions are reflected in the map.



STADIUM EVENT PERFORMANCE PARKING

DDOT employs a simplified distance-derived progressive duration pricing approach for parking meters (**Figure 16**). The Stadium Event Zone encompasses Nationals Park and Audi Field and employs the following Event Rate Schedule:

Table 10 | Parking Meter Rates on Days with Stadium Events

	Event Day (12 p.m.-12 a.m.) (including Sundays and holidays)
1 st Hour	\$2.30 per Hour
Subsequent Hours	\$8.00 per Hour

These parking meter rates will apply for the entire calendar day for all days (including Sunday and Holidays) with stadium events. DDOT may adjust the rate schedule during the soccer and baseball seasons if needed, with public notice.



Figure 16 | Stadium Event Parking Restriction Locations for Audi Field and Nationals Park

The District is also rolling out a license plate-based parking payment program in this area. Drivers using kiosks in the Stadium Zone will be required to enter their license plate number and pay accordingly. With plate-based parking, customers no longer need to return to their vehicle to place a receipt on the dashboard. This method of payment is easier in general and better for parking customers with disabilities.

The District is providing reserved parking spaces on each block in the Stadium Zone for disability parking placard and license plate holders. These spaces are identified by red-pole space markers and allow drivers with disabilities to pay to park for up to four (4) hours.

OFF-STREET PARKING

Figure 17 shows the locations of parking lots and garages in the stadium area. **Table 11** shows the approximate parking capacities, primarily sourced from Parkopedia¹ and the Capital Riverfront website.² These websites do not specify the number of spaces available for daily use. It is likely that not all capacities for all facilities are available for stadium use. The two (2) Nationals garages (#27 and #3) are currently only available for events at Nationals Ballpark. Audi Field does not have any off-street parking for fans at the stadium.

The off-street parking inventory will be updated every off-season to reflect changes in parking availability. Some parking areas identified are temporary surface parking lots on redevelopment sites, thus these lots will eventually be removed from the inventory. However, planned developments and developments under construction have the possibility of adding new parking opportunities for the stadium area, and many include below-grade parking garages.

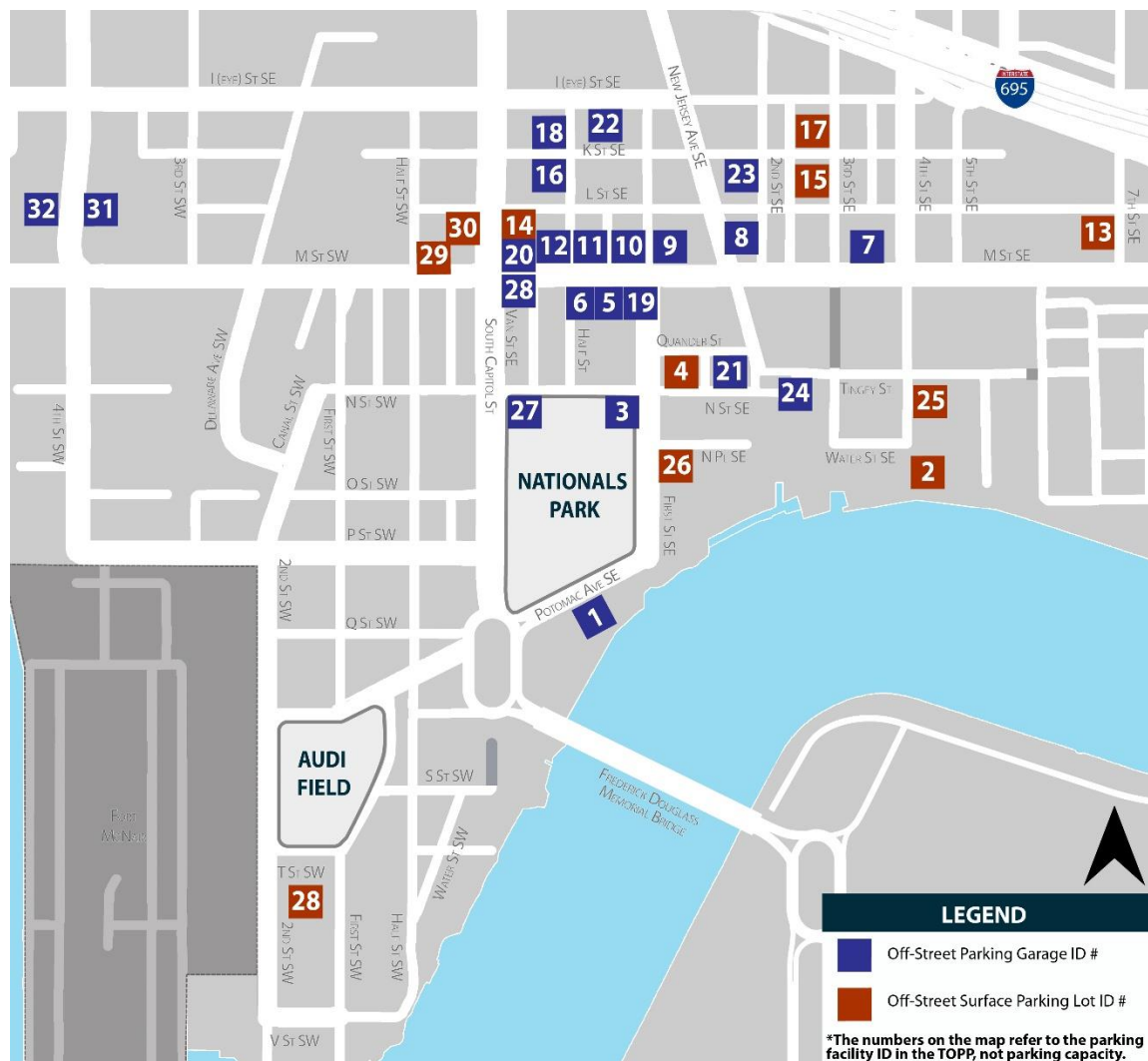


Figure 17 | Stadium Area Off-Street Parking Inventory

¹ <https://www.parkopedia.com/>

² <https://www.capitolriverfront.org/plan-your-visit/getting-around/by-car>

Table 11 | Stadium Area Off-Street Parking Inventory

Quad	Facility ID	Address	Facility Type	Approximate Number of Spaces
SE	1	79 Potomac Ave SE	Garage	149
	2	1492 4 th Street SE	Surface Lot	220
	3	75 N Street SE	Garage	850
	4	135 N Street SE	Surface Lot	100
	5	99 M Street SE	Garage	140
	6	55 M Street SE	Garage	200
	7	300 M Street SE	Garage	250
	8	1100 New Jersey Ave SE	Garage	232
	9	100 M Street SE	Garage	190
	10	80 M Street SE	Garage	300
	11	50 M Street SE	Garage	N/A
	12	20 M Street SE	Garage	190
	13	601 L Street SE	Surface Lot	190
	14	1100 S Capitol Street SE	Surface Lot	120
	15	200 L Street SE	Surface Lot	110
	16	1015 Half Street SE	Garage	272
	17	200 K Street SE	Surface Lot	120
	18	28 K Street SE	Garage	330
	19	1233 First St SE	Garage	N/A
	20	1 M Street SE	Garage	129
	21	1275 New Jersey Ave SE	Garage	N/A
	22	949 First Street SE	Garage	251
	23	1000 Second St SE	Garage	N/A
	24	3 Tingey St SE	Garage	N/A
	25	1485 4 th St SE	Surface Lot	189
	26	125 O St SE	Surface Lot	N/A
	27	1500 S Capitol St SE	Garage	850
SW	28	1880 Second Street SW	Surface Lot	133
	29	25 M Street SW	Surface Lot	160
	30	1101 S Capitol Street SW	Surface Lot	56
	31	1100 4 th Street SW	Garage	287
	32	1101 4 th Street SW	Garage	220

Note: Not all capacities for all facilities are available for stadium use.

STADIUM EVENT PERFORMANCE PARKING

DDOT employs a simplified distance-derived progressive duration pricing approach for parking meters. The Stadium Event Zone encompasses Nationals Park and Audi Field and employs the following Event Rate Schedule:

Table 12 | Parking Meter Rates on Days with Stadium Events

	Event Day (7 a.m.-12 a.m.) (including Sundays and holidays)
1 st Hour	\$2.30 per Hour
Subsequent Hours	\$8.00 per Hour

These parking meter rates will apply for the entire calendar day for all days (including Sunday and Holidays) with stadium events. DDOT may adjust the rate schedule during the soccer and baseball seasons if needed, with public notice.

The Stadium Zone is bordered by the Anacostia River, I-695, Second Street SW/Delaware Avenue SW and 5th Street SE (see **Figure 1**Figure 1).

The District is also rolling out a license plate-based parking payment program in this area. Drivers using kiosks in the Stadium Zone will be required to enter their license plate number and pay accordingly. With plate-based parking, customers no longer need to return to their vehicle to place a receipt on the dashboard. This method of payment is easier in general and better for parking customers with disabilities.

The District is providing reserved parking spaces on each block in the Stadium Zone for disability parking placard and license plate holders. These spaces are identified by red-pole space markers and allow drivers with disabilities to pay to park for up to four (4) hours.

FOR-HIRE VEHICLE ACCESS

AUDI FIELD

During Audi Field events, there is no dedicated pre-game taxi and rideshare drop-off and post-game pick-up location.

To promote pedestrian safety and reduce vehicle conflicts near the stadium, DDOT requested for-hire vehicles to refrain from passenger pick-ups and drop-offs in the immediate vicinity of Audi Field (e.g., R Street SW, Potomac Avenue SW, Second Street SW). DDOT has asked Audi Field staff to work with rideshare companies to encourage them to disperse passengers away from the stadium, in particular on Potomac Ave SE on the south side of Nationals Park and on P Street SW west of Second Street (**Figure 18**).

- M Street between 5th Street SE and Delaware Avenue SW; and
- Any street closed to all traffic.

Washington Nationals staff works with rideshare companies to encourage them to load and unload passengers away from the stadium and banned streets, as indicted in **Figure 19**. Rideshare companies are encouraged to use geofencing technology to support this goal. The locations assigned for specific passengers to meet their drivers, however, are assigned by rideshare companies on a dynamic basis, taking into account real-time factors such traffic conditions and the exact spot where the person requesting a ride is located. It is, therefore, impractical to designate specific pick-up spots for rideshare customers, but rather encourage that activity be dispersed several blocks away from the event venue.

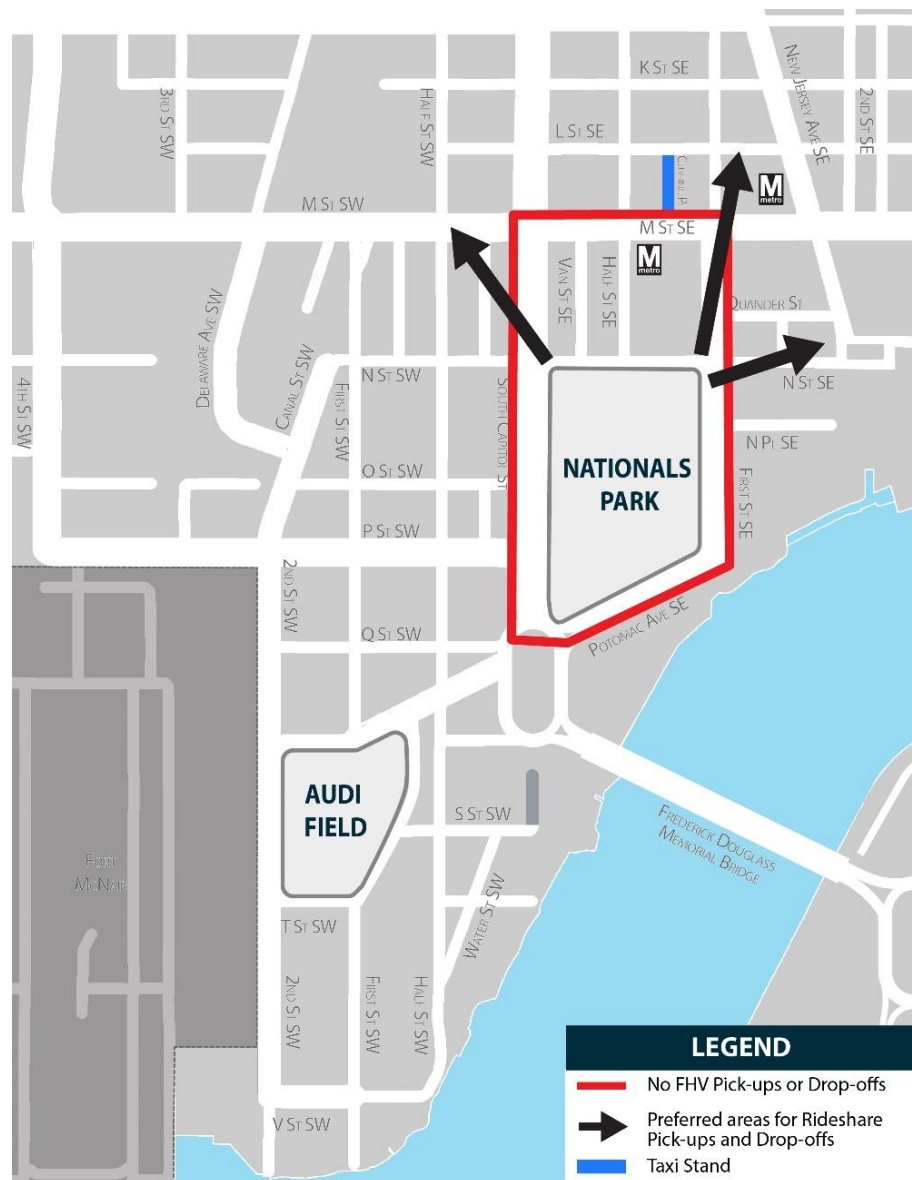


Figure 19 | Preferred Rideshare Pick-Up/Drop-Off Locations for Nationals Park Events

The Nationals website includes a link to the following rideshare information:

<https://www.mlb.com/nationals/ballpark/transportation/taxis-and-ride-hailing-services>

CHARTER BUS MANAGEMENT

AUDI FIELD

Charter buses will load and unload from a reserved area on 2nd Street SW. This location was selected partially because the access and egress routes provide turns that are easier for buses to make. After charter buses unload, they will proceed to designated charter bus parking lots per the goDCgo website and return to the designated stadium loading location when the event is close to concluding.

NATIONALS PARK

Prior to start of games, tour buses unload passengers on First Street east of Potomac Avenue SE and on Potomac Avenue east of South Capitol Street SE. Once passengers have departed, buses should proceed to either Second Street SW between R Street and T Street SW or Lot W at the intersection of M Street and 7th Street SE. Given limited parking availability for tour buses at Lot W, the Nationals should make alternate parking arrangements for tour buses in excess of the Lot W parking capacity.

Buses (and limousines) wishing to pick up passengers must return to the drop-off/pick-up location, adjacent to the ballpark, during the seventh inning to pick up their passengers after the game. Failure to do so or late arrival will result in the vehicles being disallowed access to the drop-off/pick-up location.

PUBLIC TRANSIT

METRORAIL SERVICE

The Metrorail Green Line is the primary route serving Audi Field and Nationals Park. Nationals Park is also relatively accessible via the Metrorail Orange, Blue, and Silver Lines. **Figure 20** shows the stations in relation to Audi Field and Nationals Park.

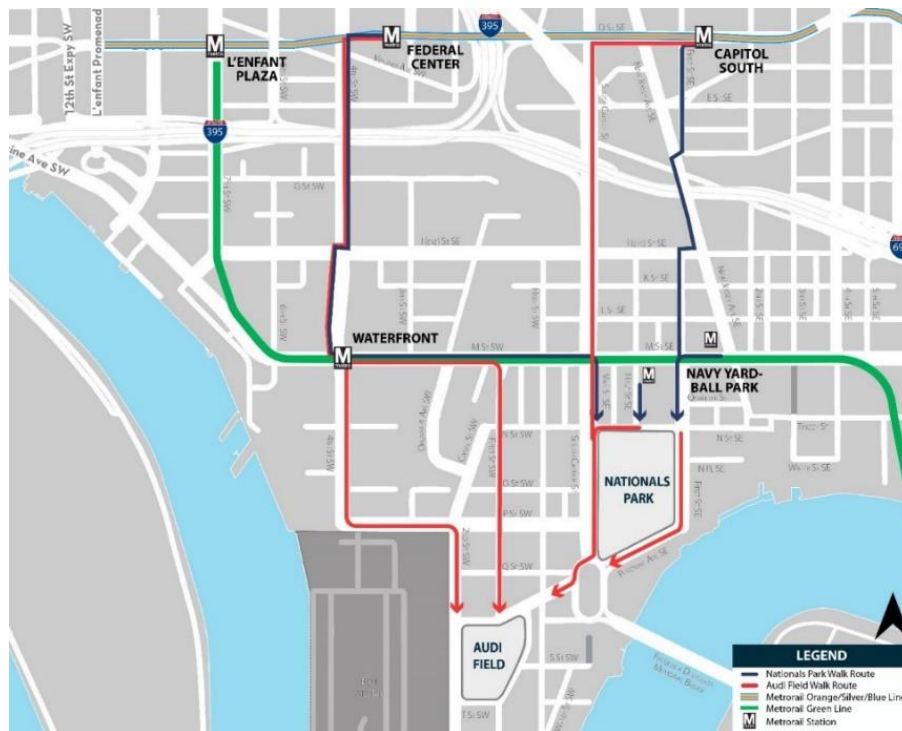


Figure 20 | Metrorail Stations Serving Stadium Area

METROBUS SERVICE

Based on WMATA's 2025 Better Bus Network Redesign, several WMATA Metrobus routes will serve the stadium area and broader impact area: C55, D50, and C31. **Table 13** provides a summary of the times when each route operates. A web link is provided below to access a map and timetable for each route. Each route has specific start and end times depending on direction and stop (some lines have multiple stops in the vicinity of the ballpark). During stadium events the C55 Metrobus currently does not operate on 2nd St, V St, and Half Street near Audi Field, as shown in **Figure 21**. However, WMATA is considering operational changes to bring back the bus services during stadium events. Its plan will be finalized and available in July 2025.

Table 13 | Metrobus Routes Serving Stadium Area

Route #	Route Map	2025 Better Bus Network Frequency
C55	2025 Better Bus Network	Low Frequency (Every 20 Minutes or Better)
D50		Medium Frequency (Every 30 Minutes or Better)
C31		High Frequency (Every 12 Minutes or Better)

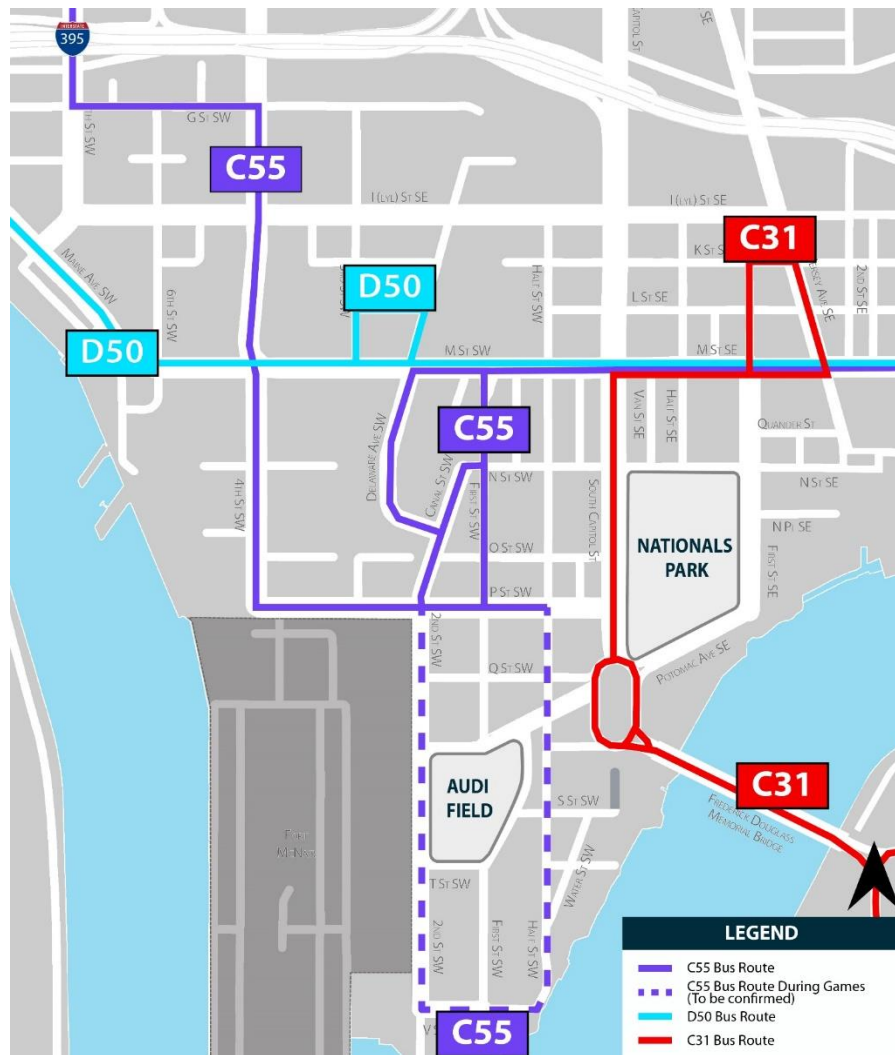


Figure 21 | Metrobus Routes C55, D50, and C31

WATER TAXI

Water taxi service is available to the stadium area from Old Town Alexandria and will operate until the end of baseball and soccer games no matter how late. Information can be found at:

<https://www.potomacriverboatco.com/water-taxi/diamond-teague/>

ADA SHUTTLE (AUDI FIELD ONLY)

A dedicated shuttle service is provided by DC United for patrons with mobility challenges who wish to drive and park or take Metrorail. The shuttle route is shown in **Figure 22** (note that on days with National Park events that conflict with Audi Field events, a slightly revised shuttle route is required). Patrons with mobility challenges who wish to use the shuttle should use the Navy Yard Metrorail station if taking transit or park in a parking lot near a shuttle stop if driving.

Shuttle service will begin running 90 minutes prior to the start of the game and will run one (1) hour after the game has ended. The headway at each shuttle stop is approximately 15 minutes. Information regarding Audi Field access for patrons with mobility challenges will be posted on the transportation hub of the DC United website.

The shuttle routes are subject to change and may be updated during off-seasons to reflect new routing options and/or changes to the dedicated parking areas.

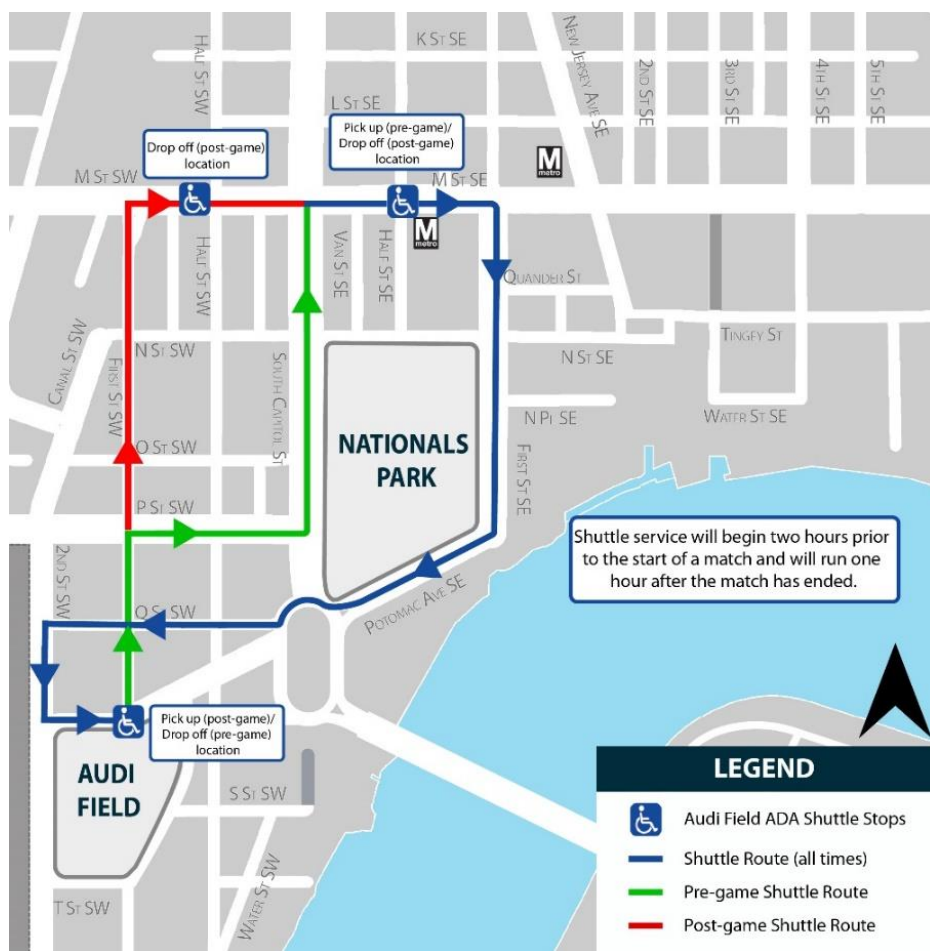


Figure 22 | Audi Field Limited Mobility Shuttle Route

BIKES AND SCOOTERS

DDOT has a well-established and very successful bicycle program that is committed to providing safe and convenient bicycle access throughout the District. DDOT has created more than 90 miles of marked bike lanes and has over 300 of the 700+ bike share stations in the regional Capital Bikeshare system (DC, Maryland, Virginia).

Web links are provided below to access a map showing bicycle facilities near Audi Field and Nationals Park. There is also bicycle parking available at Audi Field and Nationals Park for attendees who use their own bicycles to travel. The full District bicycle map can be found at: <http://godcgo.com/bike/>

AUDI FIELD

Free bicycle valet service will be provided at the southwest corner of Audi Field, adjacent to the 2nd Street SW cycle track (see **Figure 24**). The bicycle valet service will be available for patrons of stadium events and stadium employees on event days. The bicycle valet is located in a secure, covered area and will provide enough space for a minimum of 190 bicycles. The bike valet will operate at least one (1) hour prior to the start of an event and a half hour after the end of an event. The opening and closing times of the bike valet will be adjusted as needed for pre- and post-game events. There are also numerous Capital Bikeshare stations located near Audi Field (see **Figure 24**).

Permanent short-term bicycle parking is available along Second Street SW, Potomac Avenue SW, T Street SW, S Street SW, Half Street SW, and First Street SW within close proximity to bicycle facilities on Second Street SW and Potomac Avenue SW, as well as stadium entry gates. Numerous bike racks are located on Audi Field property, surrounding the entire stadium. As part of the Enhanced TOPP, additional temporary bicycle parking will be placed along the perimeter of Audi Field on sidewalks and/or within on-street parking spaces.

DDOT is communicating with scooter and bike companies that operate in the District, as well as DC United, to develop and continuously refine options to manage dockless scooter and bike parking near the stadium. Dockless parking racks and corrals exist along the perimeter of the stadium and along Half Street SW. The geofenced area around Audi Field will remain the same as previous years to discourage drop-offs in the immediate vicinity of the stadium (see Figure 23), however trips will be able to end within the restricted area if the device's GPS shows it is inside the corral. Dockless bikes can also be parked at regular bike racks located throughout the stadium area. The goal of this strategy is to provide access to these transportation modes while reducing the number of dockless scooters and bikes left in the immediate vicinity of the stadium. DDOT will monitor this strategy throughout the season and adjust as needed.

NATIONALS PARK

DDOT maintains ongoing communication with scooter companies operating in the District, as well as the Nationals, to manage dockless scooter and bike parking near the stadium. As shown in **Figure 23**, Nationals Park has a geofenced area where dockless scooters and bikes are disabled. In previous years, there were dockless bike and scooter parking corrals on First Street SE and New Jersey Avenue SE that provided additional parking during events. These corrals will remain, along with corrals along South Capitol Street and Potomac Avenue SE. Similar to the geofencing at Audi Field, trips will be able to end within the restricted area if the device's GPS shows it is inside the corral.

Nationals Park offers a free bike valet located in Garage C at the corner of N and 1st Street SE, with space for up to 250 bicycles. Access to the valet is on First Street just left of the vehicle entrance. The valet accepts bikes two (2) hours before game time and closes one (1) hour after the last out. There are also numerous Capital Bikeshare stations located near Nationals Park (see **Figure 24**). The link below is an interactive map of the Capital Bikeshare stations: https://capitalbikeshare.com/#homepage_map.

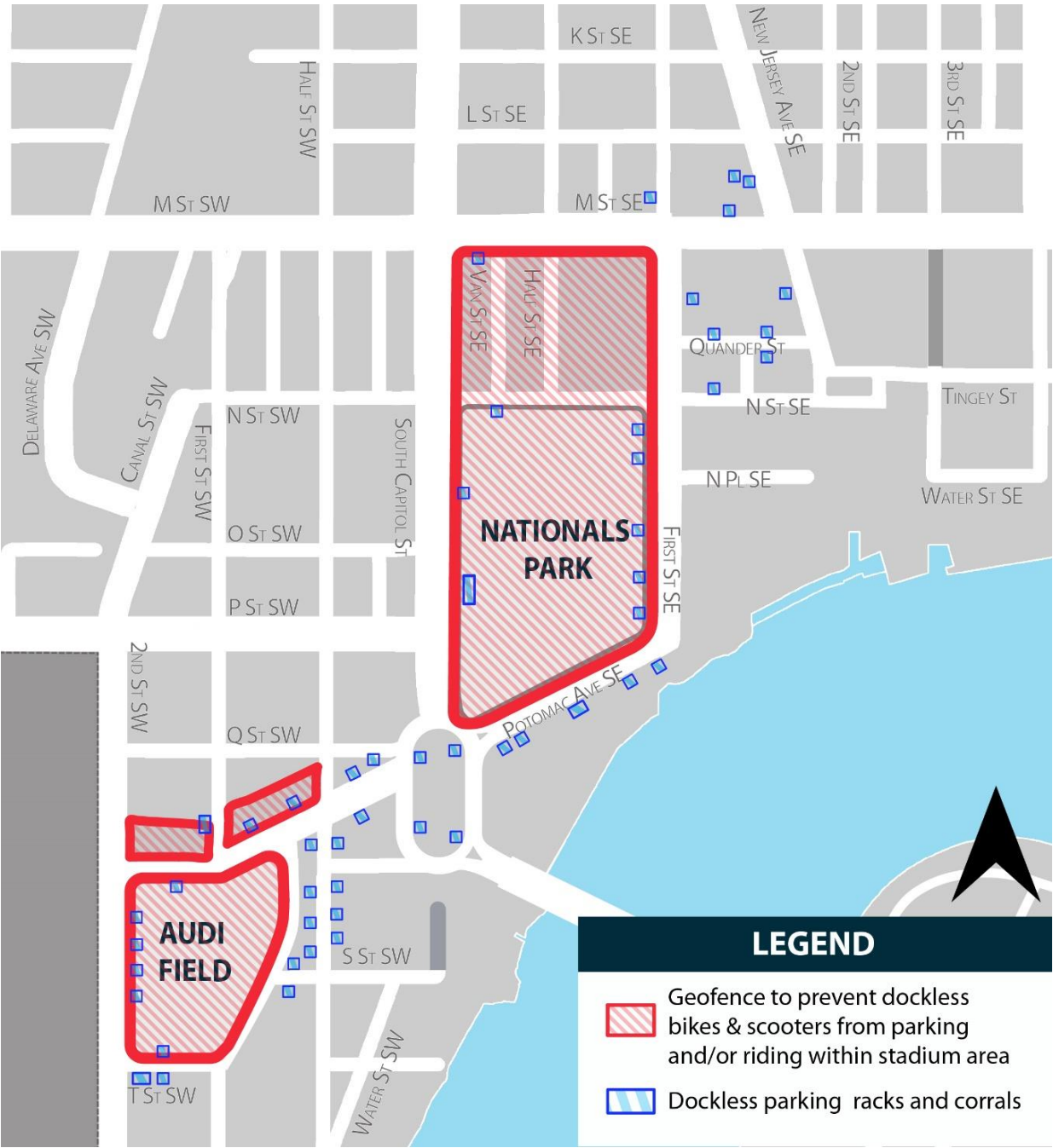


Figure 23 | Geofenced Areas around Audi Field and Nationals Park



Figure 24 | Capital Bikeshare Locations in Stadium Area

RESTRICTIONS ON WORK IN PUBLIC SPACE

All private development projects and any work requiring occupancy of public space associated with these projects or for other uses are subject to additional limitations, conditions, and restrictions based on TOPP needs. The projects subject to these limitations, conditions, and restrictions include any public space work within the following boundaries:

- To the north: I-395/I-695;
- To the south: Anacostia River;
- To the west: 9th Street/Maine Avenue (Wharf area in SW); and
- To the east: 11th Street, SE/I-695.

Projects within these geographic boundaries must cease all work in public space at least three (3) hours before the announced start of any home games and three (3) hours before the announced start time of any concerts and other public events. These restrictions will remain in place until two (2) hours after events end at Audi Field and Nationals Park.

In addition to ceasing all work in public space, all temporary material in public space that is installed and removed for each workday (e.g. traffic control devices for temporary work zones) must be removed from public space at least three (3) hours before the announced start times as noted above for events at Audi Field and Nationals Park. Also, all vehicle traffic accessing the site must be completed and the last vehicle of the day must have exited the work site at least three (3) hours before the announced start times for events at Audi Field and Nationals Park.

A list of affected project locations can be obtained from DDOT's Public Space Regulations Division.

SIDEWALK VENDORS

AUDI FIELD

The District Department of Licensing and Consumer Protection (DLCP) is evaluating options to permit sidewalk vendors to operate in the vicinity of Audi Field, but specific locations have not yet been confirmed.

NATIONALS PARK

Sidewalk vendors have historically been located in an approved vending area on the 1200 block of Half St SE and the unit block of N St SE. However, DLCP is currently re-evaluating locations. Confirmed locations will be available in April 2024 for the May 2025 vending lottery. More information can be found at DLCP's Vending Portal at <https://eservices.dcra.dc.gov/VendingLottery>.

EMERGENCY EVACUATION WALKOUT PLAN

In the event of an emergency evacuation walkout, agency staff should follow directions given by MPD. Evacuees may be directed to walk toward the Frederick Douglass Bridge or another route depending on the nature and location of the emergency.